

ELEVEN

IN THE ROADS

FLOORPLANS

ELEVEN

IN THE ROADS

UNIT 101

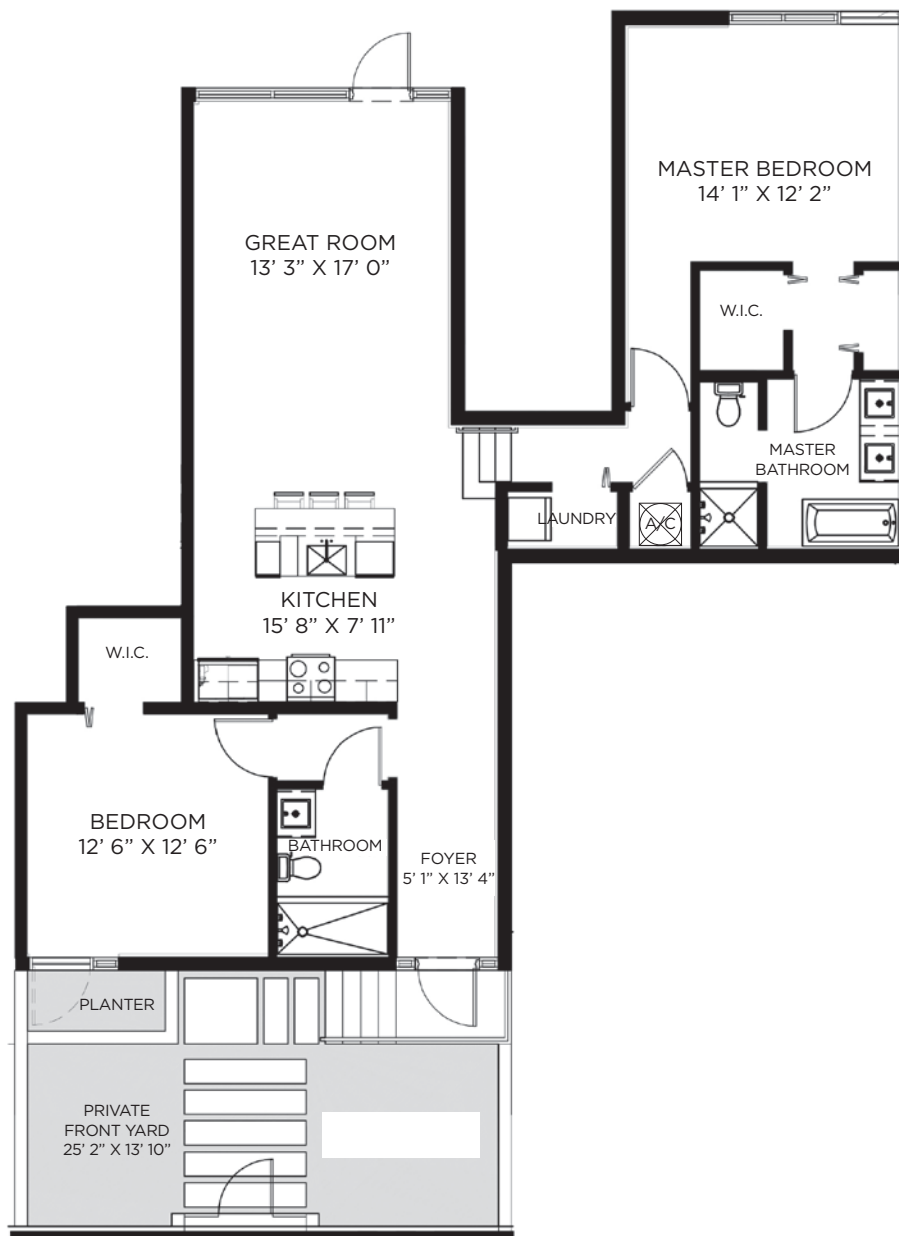
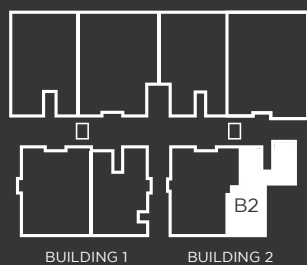
TYPE B2

2 BEDROOM - 2 BATH

A/C AREA	1,372 SQ. FT.
PRIVATE FRONT YARD	354 SQ. FT.
TOTAL AREA	1,726 SQ. FT.



LEVEL 1



STATED DIMENSIONS ARE MEASURED TO THE EXTERIOR BOUNDARIES OF THE EXTERIOR WALLS AND THE CENTERLINE OF INTERIOR DEMISING WALLS AND IN FACT VARY FROM THE DIMENSIONS THAT WOULD BE DETERMINED BY USING THE DESCRIPTION AND DEFINITION OF THE "UNIT" SET FORTH IN THE DECLARATION. ALL FLOOR PLANS AND DEVELOPMENT PLANS ARE APPROXIMATE AND SUBJECT TO CHANGE

ELEVEN

IN THE ROADS

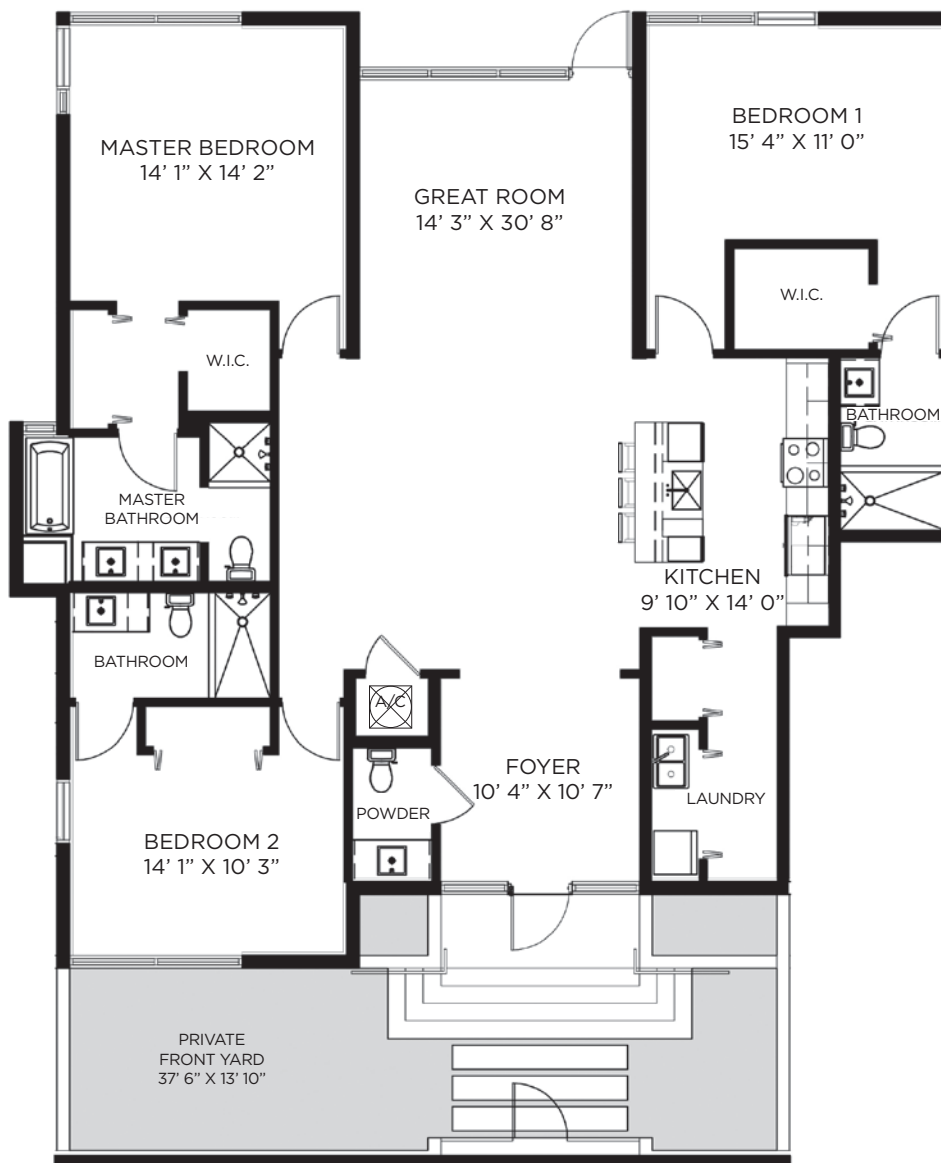
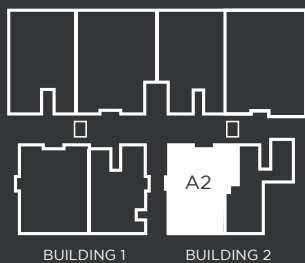
UNIT 102 TYPE A2

3 BEDROOM - 3.5 BATH

A/C AREA	2,028 SQ. FT.
PRIVATE FRONT YARD	461 SQ. FT.
TOTAL AREA	2,489 SQ. FT.



LEVEL 1



STATED DIMENSIONS ARE MEASURED TO THE EXTERIOR BOUNDARIES OF THE EXTERIOR WALLS AND THE CENTERLINE OF INTERIOR DEMISING WALLS AND IN FACT VARY FROM THE DIMENSIONS THAT WOULD BE DETERMINED BY USING THE DESCRIPTION AND DEFINITION OF THE "UNIT" SET FORTH IN THE DECLARATION. ALL FLOOR PLANS AND DEVELOPMENT PLANS ARE APPROXIMATE AND SUBJECT TO CHANGE

ELEVEN

IN THE ROADS

UNIT 103

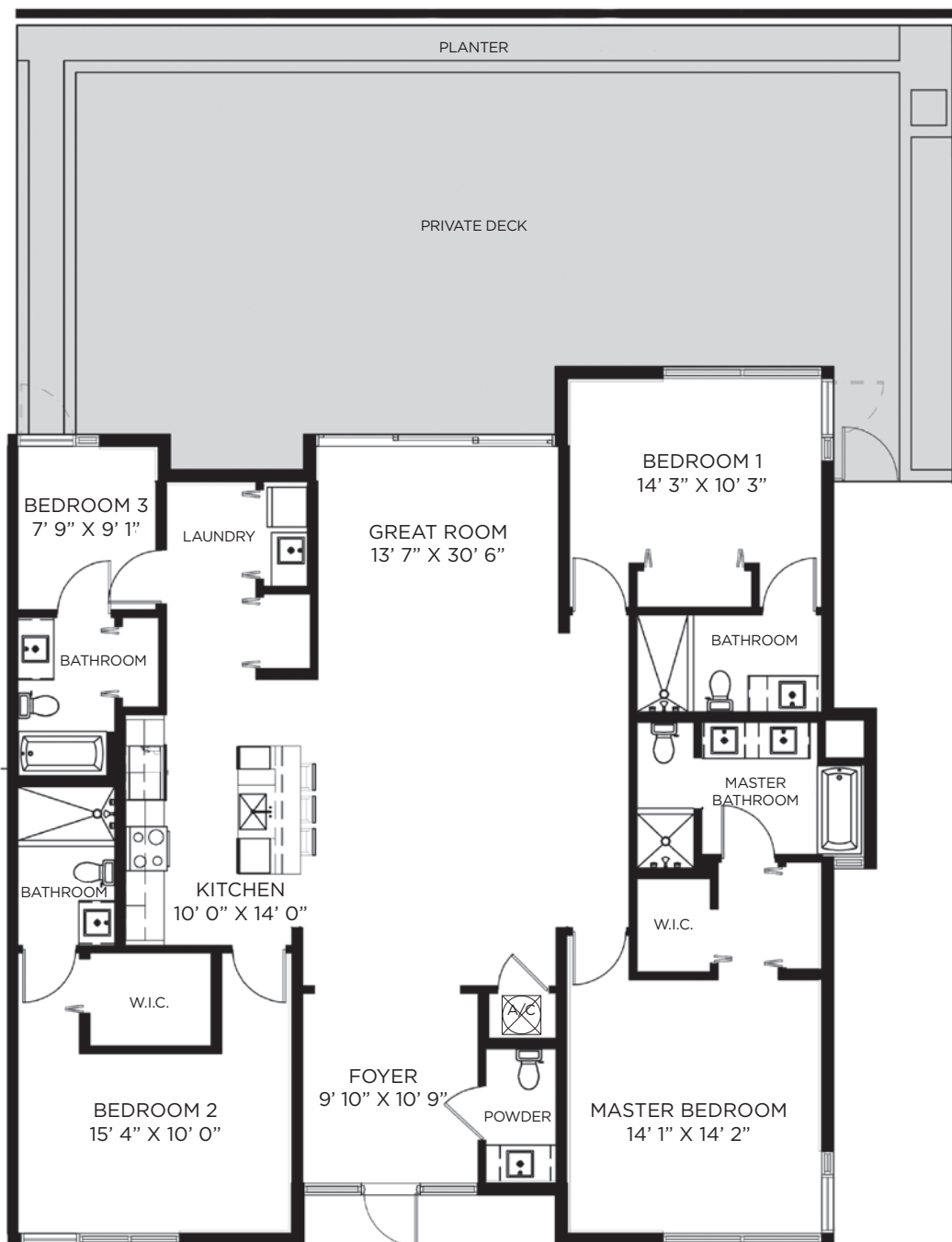
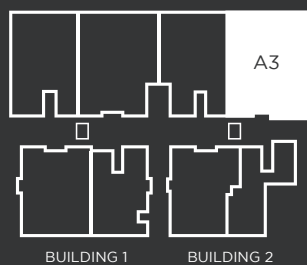
TYPE A3

4 BEDROOM - 4.5 BATH

A/C AREA	2,161 SQ. FT.
PRIVATE DECK	1,514 SQ. FT.
TOTAL AREA	3,675 SQ. FT.



LEVEL 1



STATED DIMENSIONS ARE MEASURED TO THE EXTERIOR BOUNDARIES OF THE EXTERIOR WALLS AND THE CENTERLINE OF INTERIOR DEMISING WALLS AND IN FACT VARY FROM THE DIMENSIONS THAT WOULD BE DETERMINED BY USING THE DESCRIPTION AND DEFINITION OF THE "UNIT" SET FORTH IN THE DECLARATION. ALL FLOOR PLANS AND DEVELOPMENT PLANS ARE APPROXIMATE AND SUBJECT TO CHANGE

ELEVEN

IN THE ROADS

UNIT 104

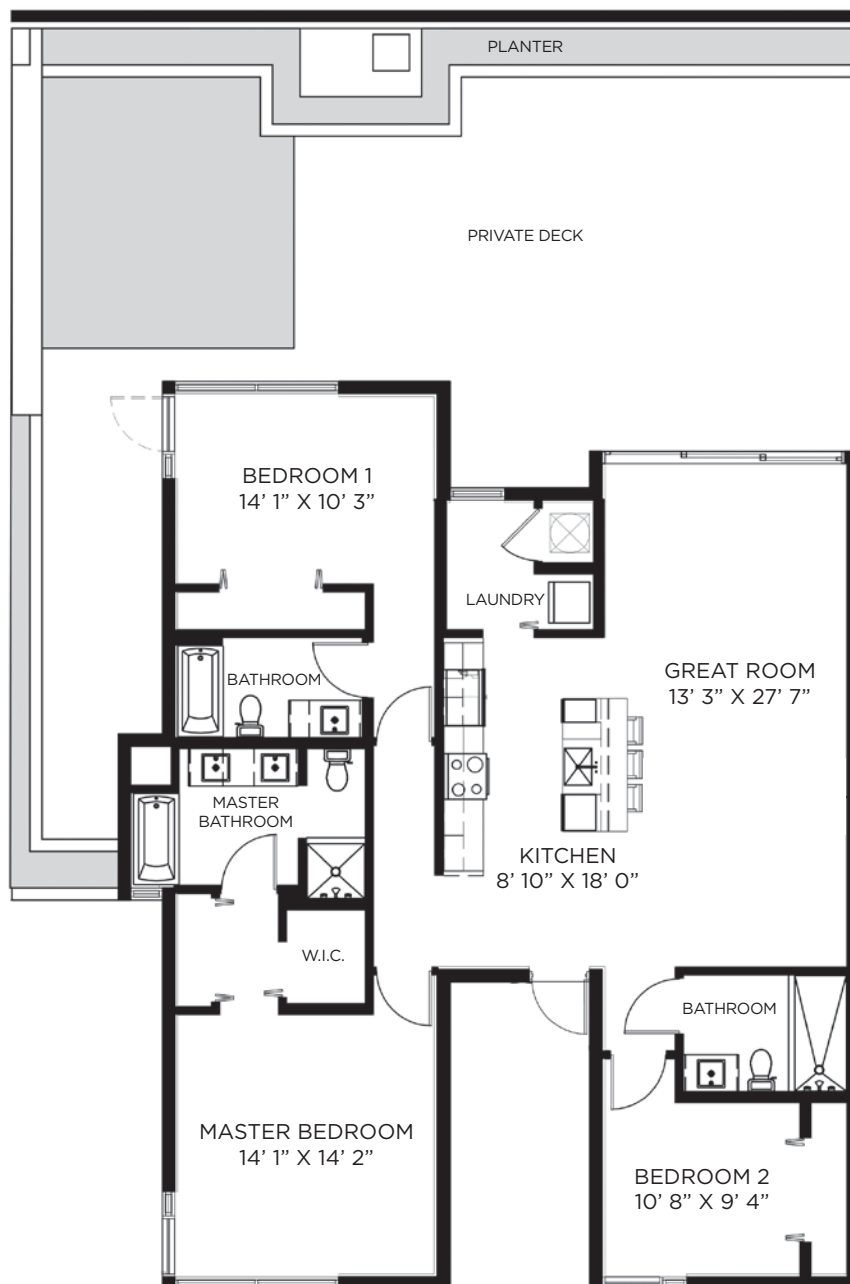
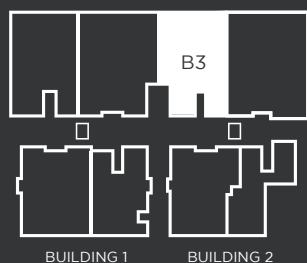
TYPE B3

3 BEDROOM - 3 BATH

A/C AREA	1,672 SQ. FT.
PRIVATE DECK	1,282 SQ. FT.
TOTAL AREA	2,954 SQ. FT.



LEVEL 1



STATED DIMENSIONS ARE MEASURED TO THE EXTERIOR BOUNDARIES OF THE EXTERIOR WALLS AND THE CENTERLINE OF INTERIOR DEMISING WALLS AND IN FACT VARY FROM THE DIMENSIONS THAT WOULD BE DETERMINED BY USING THE DESCRIPTION AND DEFINITION OF THE "UNIT" SET FORTH IN THE DECLARATION. ALL FLOOR PLANS AND DEVELOPMENT PLANS ARE APPROXIMATE AND SUBJECT TO CHANGE

ELEVEN

IN THE ROADS

UNIT 105

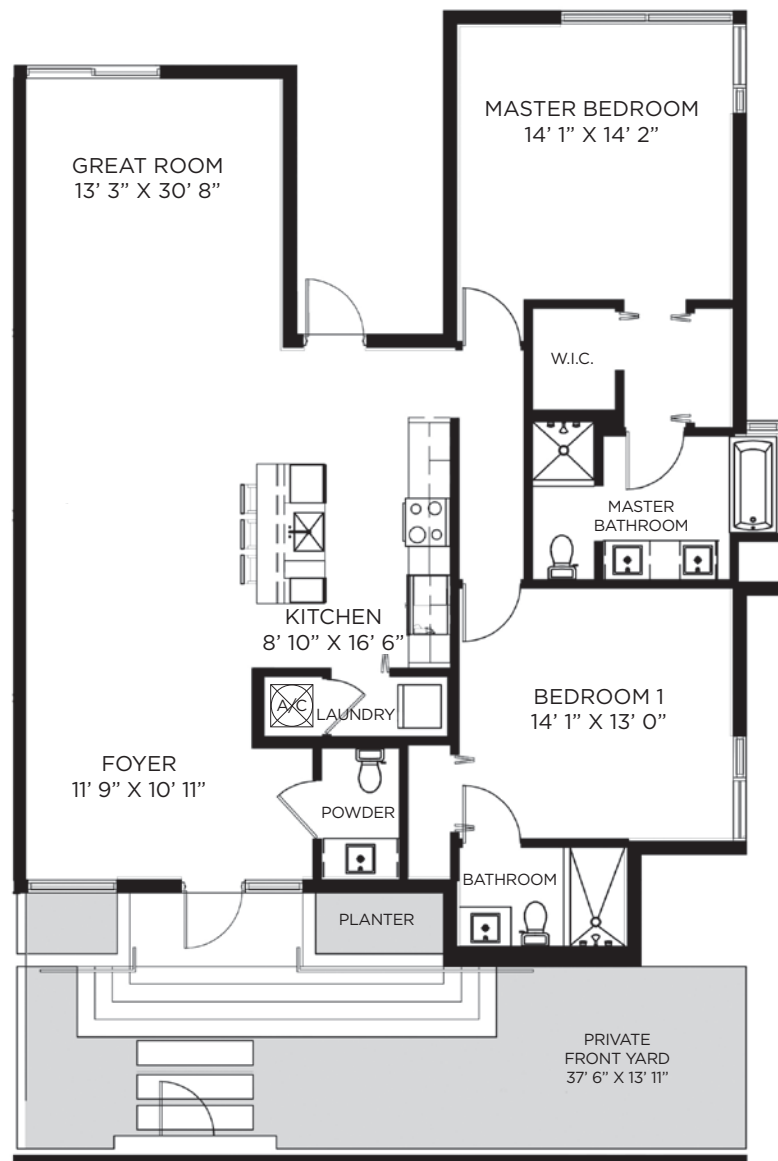
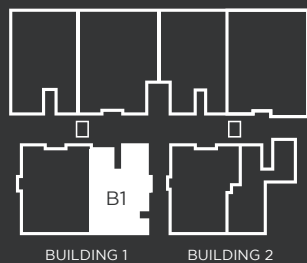
TYPE B1

2 BEDROOM - 2.5 BATH

A/C AREA	1,611 SQ. FT.
PRIVATE FRONT YARD	472 SQ. FT.
TOTAL AREA	2,083 SQ. FT.



LEVEL 1



STATED DIMENSIONS ARE MEASURED TO THE EXTERIOR BOUNDARIES OF THE EXTERIOR WALLS AND THE CENTERLINE OF INTERIOR DEMISING WALLS AND IN FACT VARY FROM THE DIMENSIONS THAT WOULD BE DETERMINED BY USING THE DESCRIPTION AND DEFINITION OF THE "UNIT" SET FORTH IN THE DECLARATION. ALL FLOOR PLANS AND DEVELOPMENT PLANS ARE APPROXIMATE AND SUBJECT TO CHANGE

ELEVEN

IN THE ROADS

UNIT 106

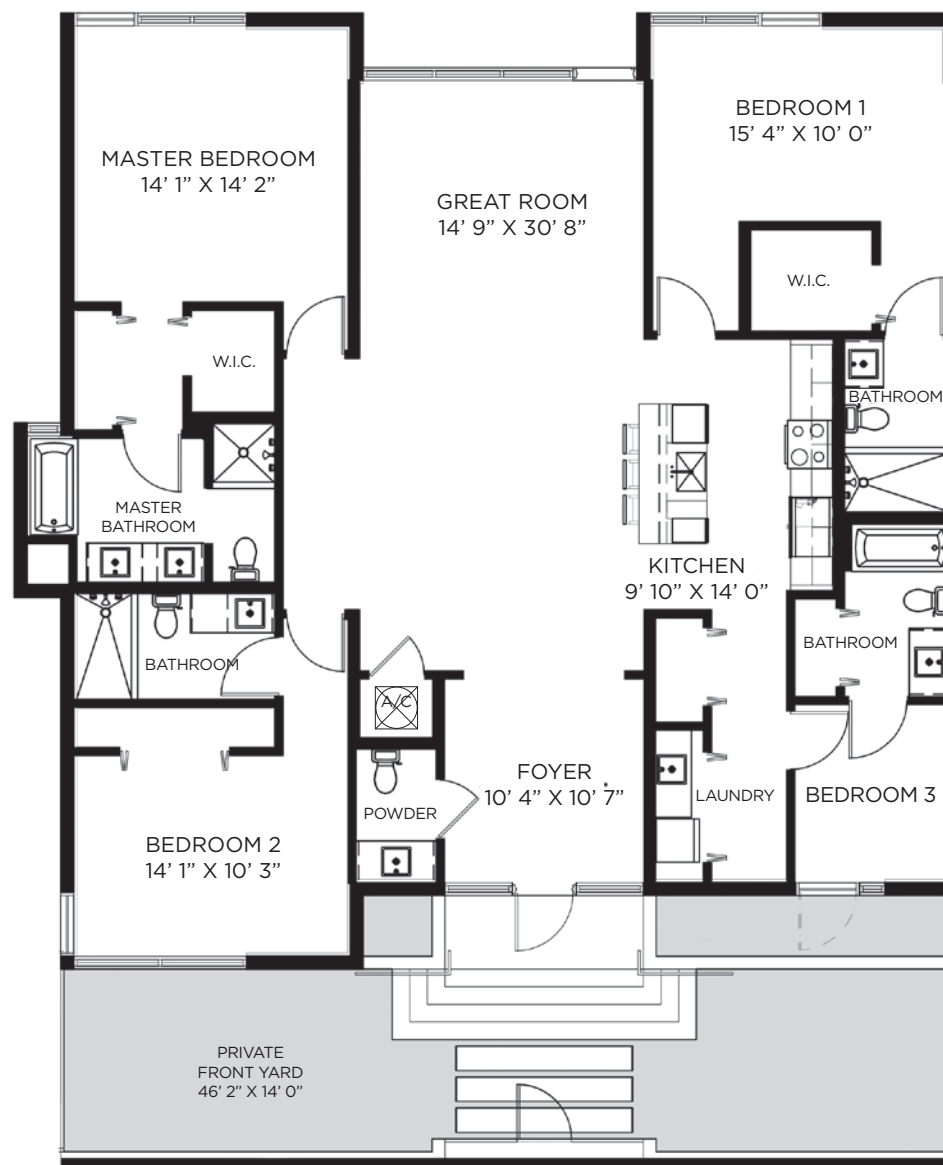
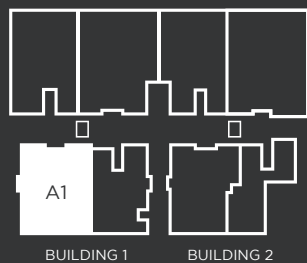
TYPE A1

4 BEDROOM - 4.5 BATH

A/C AREA 2,177 SQ. FT.
PRIVATE FRONT YARD 589 SQ. FT.
TOTAL AREA 2,766 SQ. FT.



LEVEL 1



STATED DIMENSIONS ARE MEASURED TO THE EXTERIOR BOUNDARIES OF THE EXTERIOR WALLS AND THE CENTERLINE OF INTERIOR DEMISING WALLS AND IN FACT VARY FROM THE DIMENSIONS THAT WOULD BE DETERMINED BY USING THE DESCRIPTION AND DEFINITION OF THE "UNIT" SET FORTH IN THE DECLARATION. ALL FLOOR PLANS AND DEVELOPMENT PLANS ARE APPROXIMATE AND SUBJECT TO CHANGE

ELEVEN

IN THE ROADS

UNIT 107

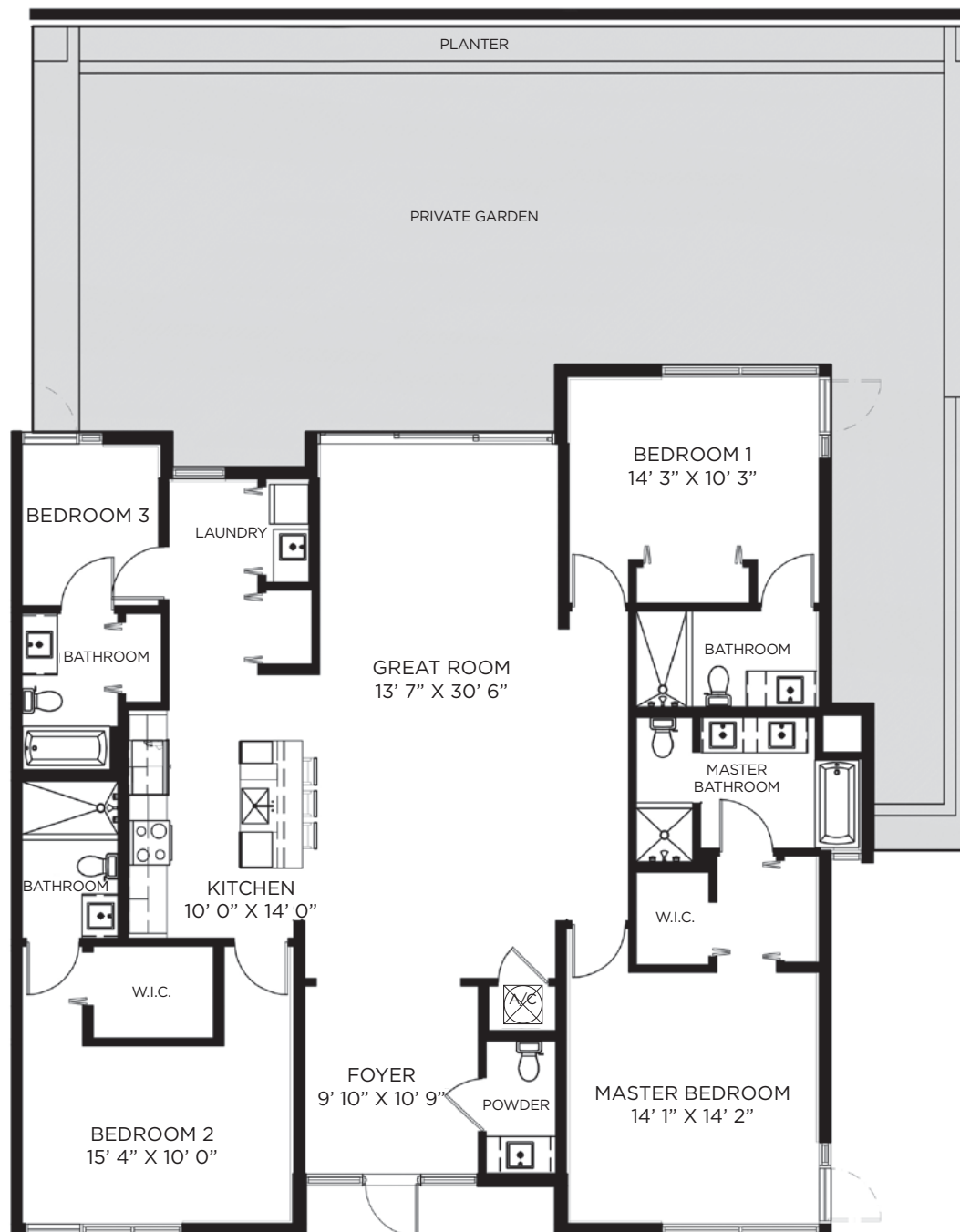
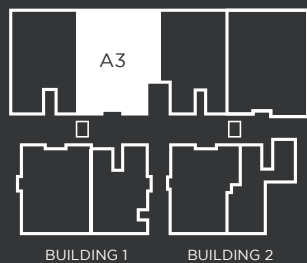
TYPE A3

4 BEDROOM - 4.5 BATH

A/C AREA	2,161 SQ. FT.
PRIVATE GARDEN	1,389 SQ. FT.
TOTAL AREA	3,550 SQ. FT.



LEVEL 1



STATED DIMENSIONS ARE MEASURED TO THE EXTERIOR BOUNDARIES OF THE EXTERIOR WALLS AND THE CENTERLINE OF INTERIOR DEMISING WALLS AND IN FACT VARY FROM THE DIMENSIONS THAT WOULD BE DETERMINED BY USING THE DESCRIPTION AND DEFINITION OF THE "UNIT" SET FORTH IN THE DECLARATION. ALL FLOOR PLANS AND DEVELOPMENT PLANS ARE APPROXIMATE AND SUBJECT TO CHANGE

ELEVEN

IN THE ROADS

UNIT 108

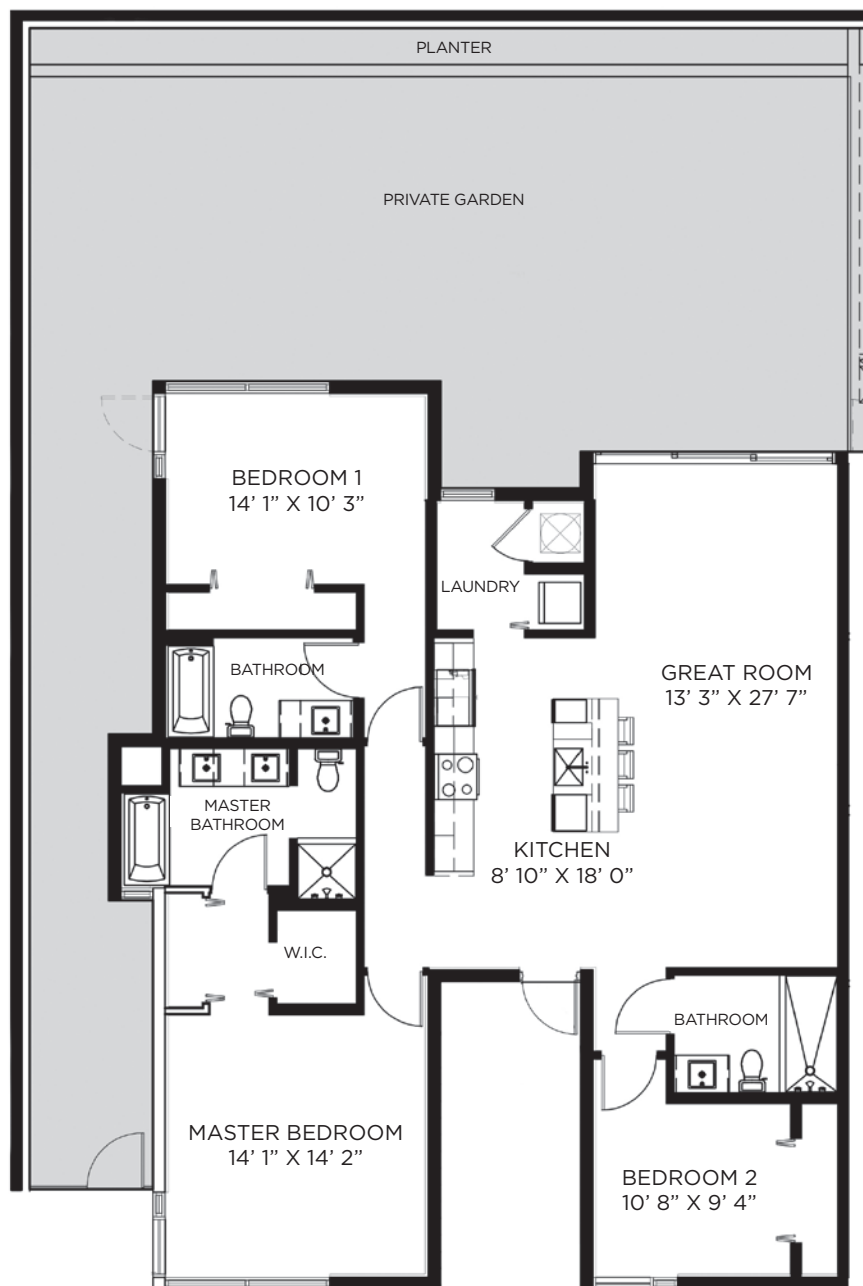
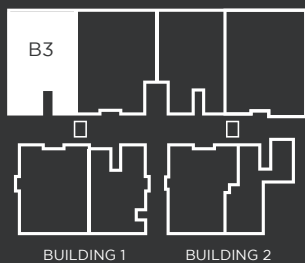
TYPE B3

3 BEDROOM - 3 BATH

A/C AREA	1,674 SQ. FT.
PRIVATE GARDEN	1,403 SQ. FT.
TOTAL AREA	3,077 SQ. FT.



LEVEL 1



STATED DIMENSIONS ARE MEASURED TO THE EXTERIOR BOUNDARIES OF THE EXTERIOR WALLS AND THE CENTERLINE OF INTERIOR DEMISING WALLS AND IN FACT VARY FROM THE DIMENSIONS THAT WOULD BE DETERMINED BY USING THE DESCRIPTION AND DEFINITION OF THE "UNIT" SET FORTH IN THE DECLARATION. ALL FLOOR PLANS AND DEVELOPMENT PLANS ARE APPROXIMATE AND SUBJECT TO CHANGE

ELEVEN

IN THE ROADS

UNIT 201 - 205

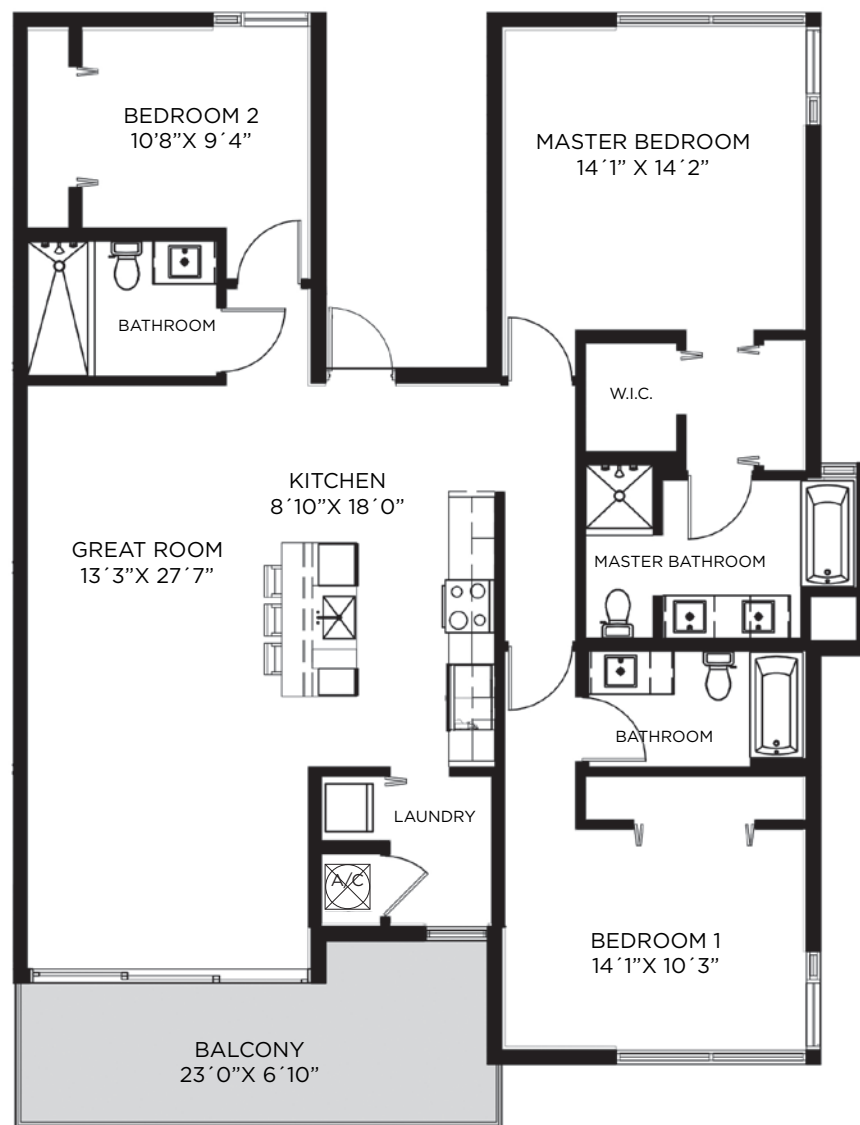
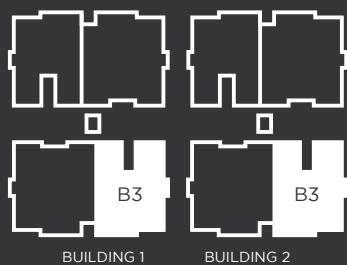
TYPE B3

3 BEDROOM - 3 BATH

A/C AREA	1,674 SQ. FT.
BALCONY	170 SQ. FT.
TOTAL AREA	1,844 SQ. FT.



LEVEL 2



STATED DIMENSIONS ARE MEASURED TO THE EXTERIOR BOUNDARIES OF THE EXTERIOR WALLS AND THE CENTERLINE OF INTERIOR DEMISING WALLS AND IN FACT VARY FROM THE DIMENSIONS THAT WOULD BE DETERMINED BY USING THE DESCRIPTION AND DEFINITION OF THE "UNIT" SET FORTH IN THE DECLARATION. ALL FLOOR PLANS AND DEVELOPMENT PLANS ARE APPROXIMATE AND SUBJECT TO CHANGE

ELEVEN

IN THE ROADS

UNIT 202 - 206

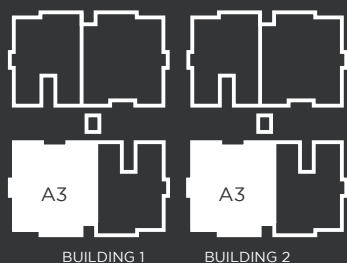
TYPE A3

4 BEDROOM - 4.5 BATH

A/C AREA	2,161 SQ. FT.
BALCONY	171 SQ. FT.
TOTAL AREA	2,332 SQ. FT.

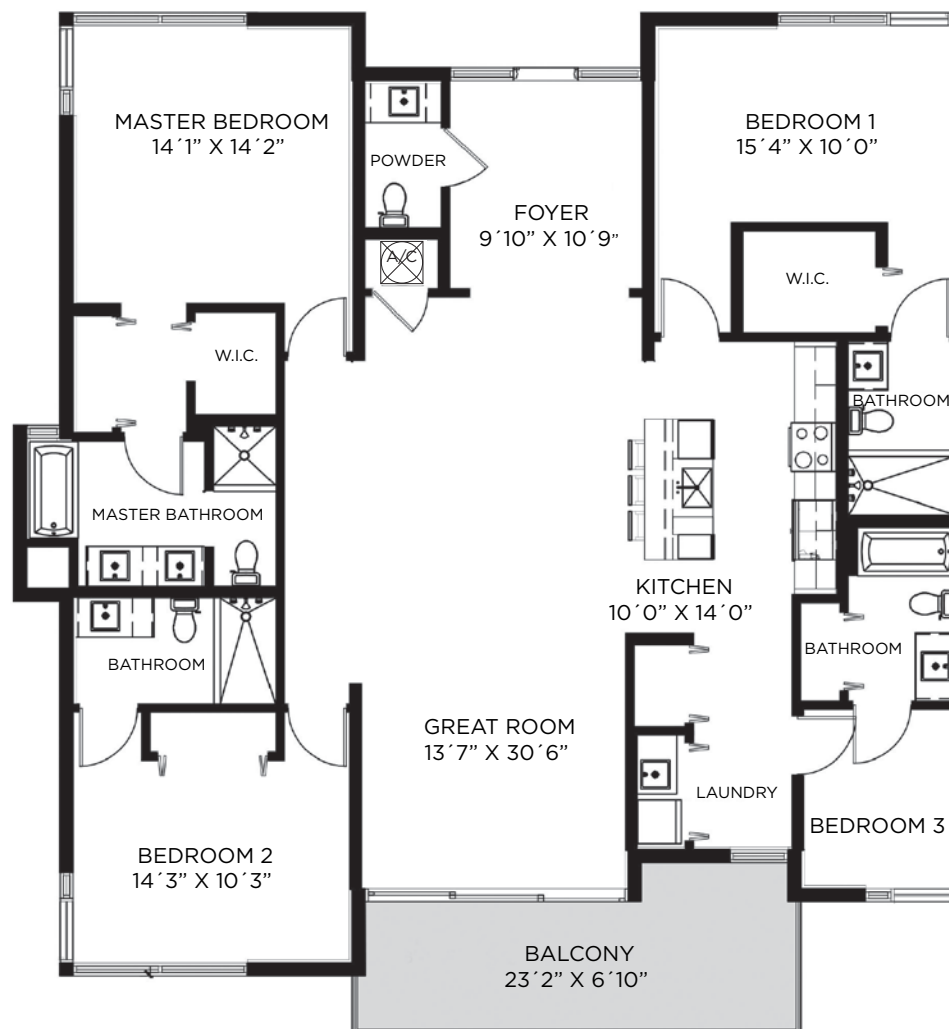


LEVEL 2



BUILDING 1

BUILDING 2



STATED DIMENSIONS ARE MEASURED TO THE EXTERIOR BOUNDARIES OF THE EXTERIOR WALLS AND THE CENTERLINE OF INTERIOR DEMISING WALLS AND IN FACT VARY FROM THE DIMENSIONS THAT WOULD BE DETERMINED BY USING THE DESCRIPTION AND DEFINITION OF THE "UNIT" SET FORTH IN THE DECLARATION. ALL FLOOR PLANS AND DEVELOPMENT PLANS ARE APPROXIMATE AND SUBJECT TO CHANGE

ELEVEN

IN THE ROADS

UNIT 203 - 207

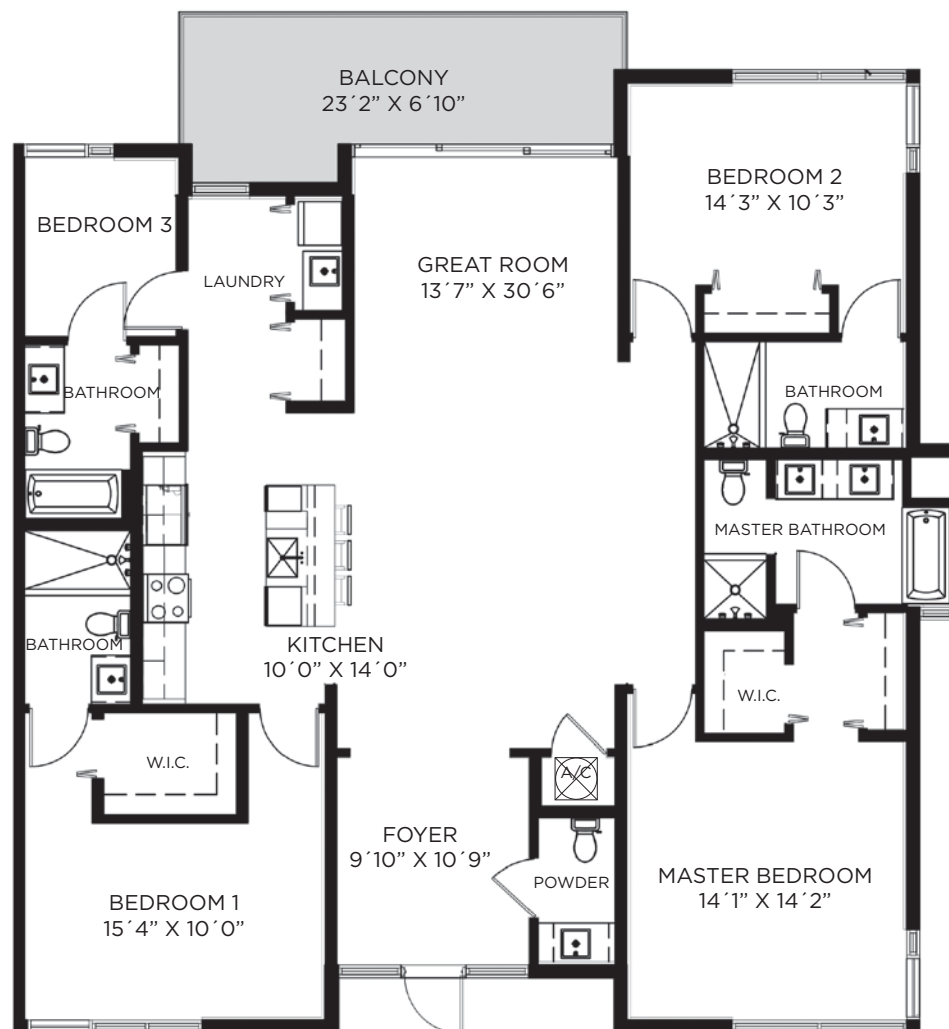
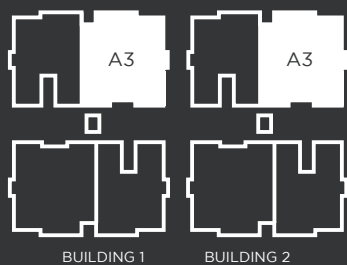
TYPE A3

4 BEDROOM - 4.5 BATH

A/C AREA	2,161 SQ. FT.
BALCONY	171 SQ. FT.
TOTAL AREA	2,332 SQ. FT.



LEVEL 2



STATED DIMENSIONS ARE MEASURED TO THE EXTERIOR BOUNDARIES OF THE EXTERIOR WALLS AND THE CENTERLINE OF INTERIOR DEMISING WALLS AND IN FACT VARY FROM THE DIMENSIONS THAT WOULD BE DETERMINED BY USING THE DESCRIPTION AND DEFINITION OF THE "UNIT" SET FORTH IN THE DECLARATION. ALL FLOOR PLANS AND DEVELOPMENT PLANS ARE APPROXIMATE AND SUBJECT TO CHANGE

ELEVEN

IN THE ROADS

UNIT 204 - 208

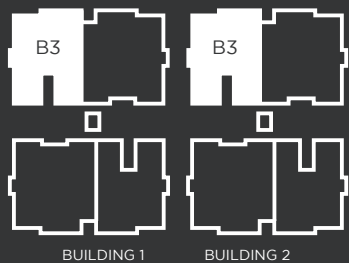
TYPE B3

3 BEDROOM - 3 BATH

A/C AREA	1,674 SQ. FT.
BALCONY	170 SQ. FT.
TOTAL AREA	1,844 SQ. FT.



LEVEL 2



STATED DIMENSIONS ARE MEASURED TO THE EXTERIOR BOUNDARIES OF THE EXTERIOR WALLS AND THE CENTERLINE OF INTERIOR DEMISING WALLS AND IN FACT VARY FROM THE DIMENSIONS THAT WOULD BE DETERMINED BY USING THE DESCRIPTION AND DEFINITION OF THE "UNIT" SET FORTH IN THE DECLARATION. ALL FLOOR PLANS AND DEVELOPMENT PLANS ARE APPROXIMATE AND SUBJECT TO CHANGE

ELEVEN

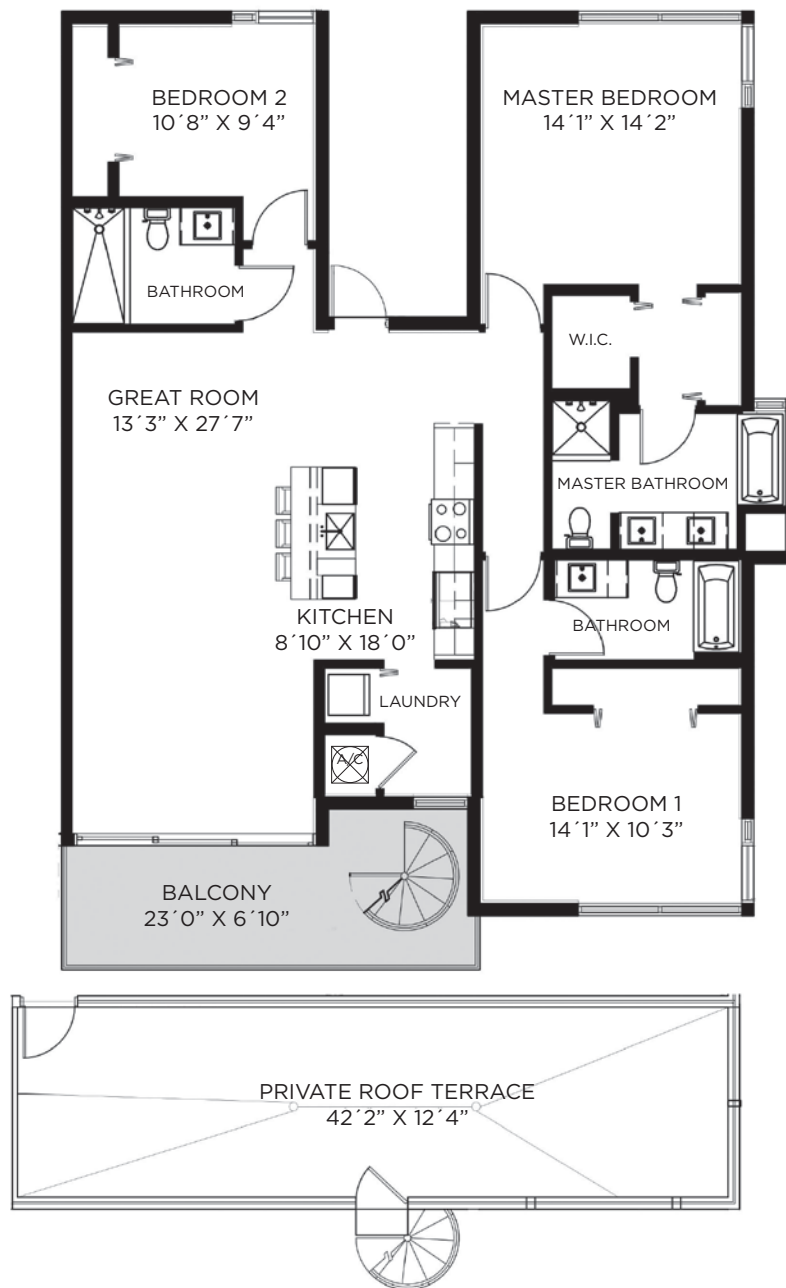
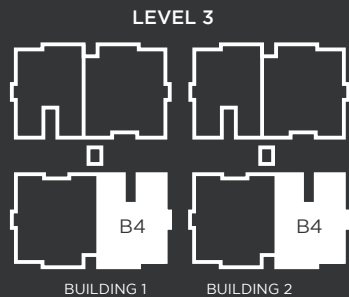
IN THE ROADS

UNIT 301 - 305

TYPE B4

3 BEDROOM - 3 BATH

A/C AREA	1,674 SQ. FT.
PRIVATE ROOF TERRACE	497 SQ. FT.
BALCONY	170 SQ. FT.
TOTAL AREA	2,341 SQ. FT.



STATED DIMENSIONS ARE MEASURED TO THE EXTERIOR BOUNDARIES OF THE EXTERIOR WALLS AND THE CENTERLINE OF INTERIOR DEMISING WALLS AND IN FACT VARY FROM THE DIMENSIONS THAT WOULD BE DETERMINED BY USING THE DESCRIPTION AND DEFINITION OF THE "UNIT" SET FORTH IN THE DECLARATION. ALL FLOOR PLANS AND DEVELOPMENT PLANS ARE APPROXIMATE AND SUBJECT TO CHANGE

ELEVEN

IN THE ROADS

UNIT 302 - 306

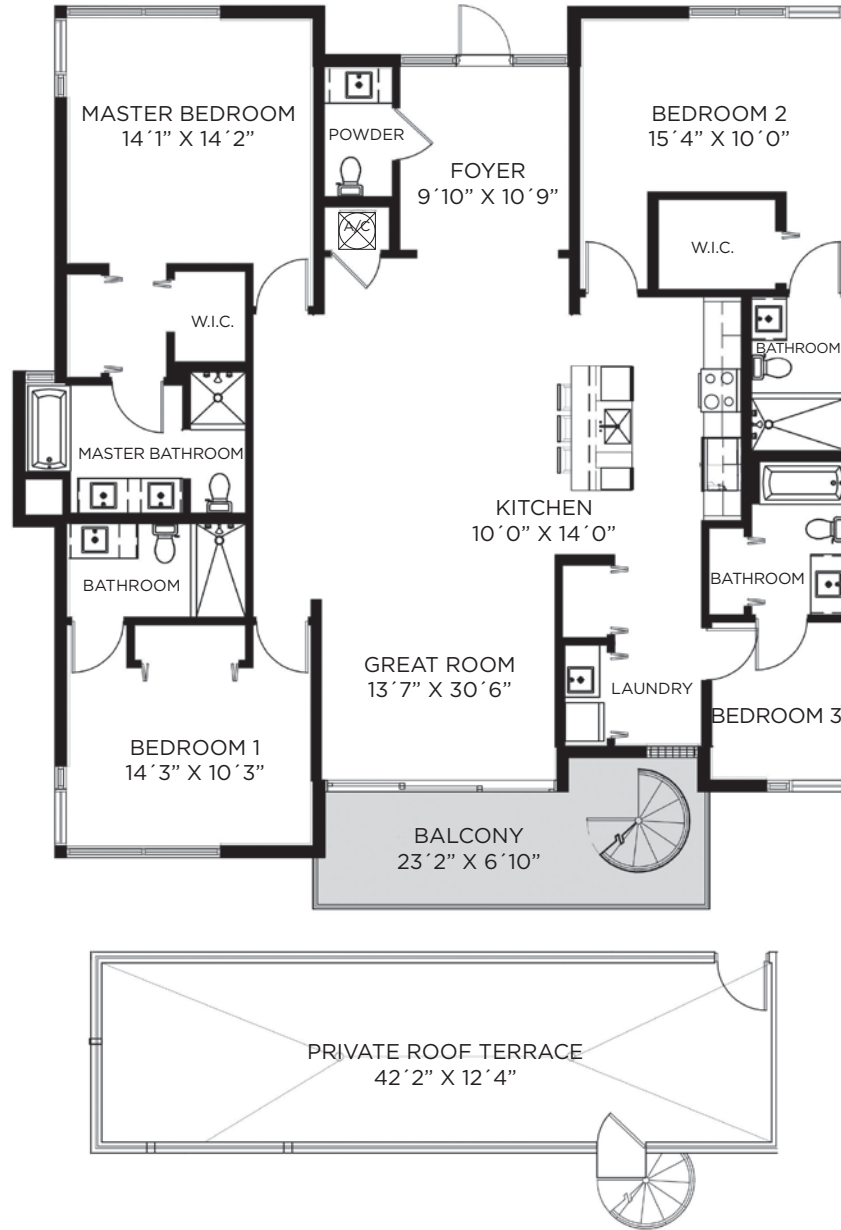
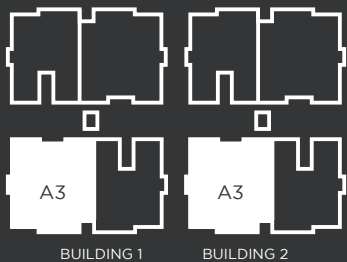
TYPE B4

4 BEDROOM - 4.5 BATH

A/C AREA	2,161 SQ. FT.
PRIVATE ROOF TERRACE	497 SQ. FT.
BALCONY	171 SQ. FT.
TOTAL AREA	2,829 SQ. FT.



LEVEL 3



STATED DIMENSIONS ARE MEASURED TO THE EXTERIOR BOUNDARIES OF THE EXTERIOR WALLS AND THE CENTERLINE OF INTERIOR DEMISING WALLS AND IN FACT VARY FROM THE DIMENSIONS THAT WOULD BE DETERMINED BY USING THE DESCRIPTION AND DEFINITION OF THE "UNIT" SET FORTH IN THE DECLARATION. ALL FLOOR PLANS AND DEVELOPMENT PLANS ARE APPROXIMATE AND SUBJECT TO CHANGE

ELEVEN

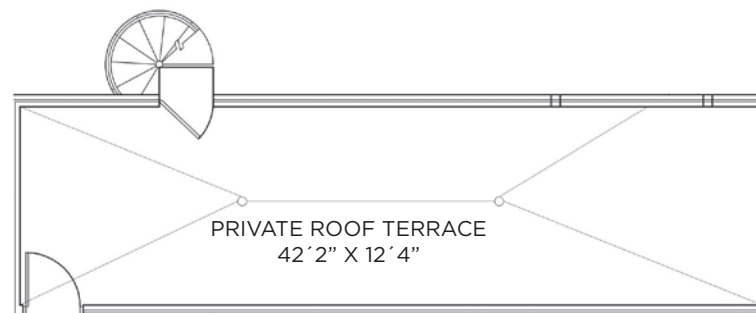
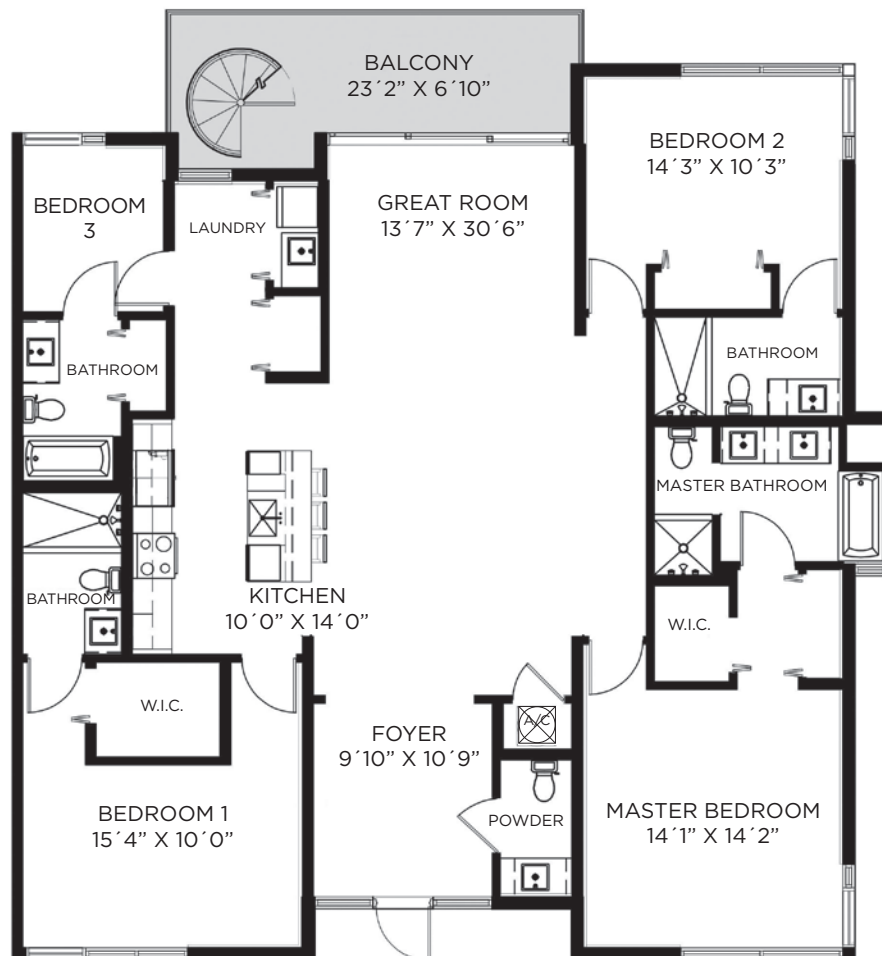
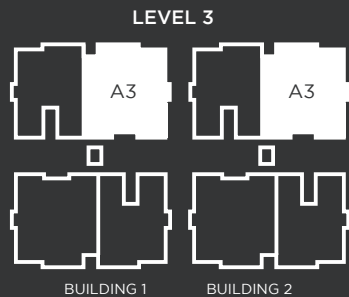
IN THE ROADS

UNIT 303 - 307

TYPE B4

4 BEDROOM - 4.5 BATH

A/C AREA	2,161 SQ. FT.
PRIVATE ROOF TERRACE	497 SQ. FT.
BALCONY	171 SQ. FT.
TOTAL AREA	2,829 SQ. FT.



STATED DIMENSIONS ARE MEASURED TO THE EXTERIOR BOUNDARIES OF THE EXTERIOR WALLS AND THE CENTERLINE OF INTERIOR DEMISING WALLS AND IN FACT VARY FROM THE DIMENSIONS THAT WOULD BE DETERMINED BY USING THE DESCRIPTION AND DEFINITION OF THE "UNIT" SET FORTH IN THE DECLARATION. ALL FLOOR PLANS AND DEVELOPMENT PLANS ARE APPROXIMATE AND SUBJECT TO CHANGE

ELEVEN

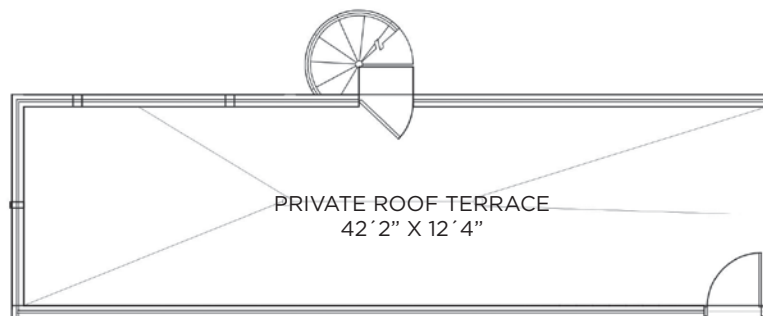
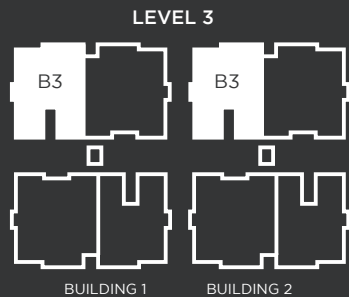
IN THE ROADS

UNIT 304 - 308

TYPE B4

3 BEDROOM - 3 BATH

A/C AREA	1,674 SQ. FT.
PRIVATE ROOF TERRACE	497 SQ. FT.
BALCONY	170 SQ. FT.
TOTAL AREA	2,341 SQ. FT.



STATED DIMENSIONS ARE MEASURED TO THE EXTERIOR BOUNDARIES OF THE EXTERIOR WALLS AND THE CENTERLINE OF INTERIOR DEMISING WALLS AND IN FACT VARY FROM THE DIMENSIONS THAT WOULD BE DETERMINED BY USING THE DESCRIPTION AND DEFINITION OF THE "UNIT" SET FORTH IN THE DECLARATION. ALL FLOOR PLANS AND DEVELOPMENT PLANS ARE APPROXIMATE AND SUBJECT TO CHANGE