

26 EDGEWATER



ENJOY, INDULGE, EMBRACE  
THE NEW EDGE OF LIVING  
AT 26 EDGEWATER



26EDGEWATER IS THE EVOLUTION OF EDGEWATER TODAY. THE FIRST TRULY BOUTIQUE RESIDENCES LOCATED IN THE HEART OF MIAMI'S EDGEWATER NEIGHBORHOOD MINUTES FROM EVERYTHING MIAMI HAS TO OFFER. WITH TOP QUALITY FINISHES AND INTERNATIONAL INFLUENCED DESIGN, 26EDGEWATER, HAS BEEN DEVELOPED AND DESIGNED AROUND THE BASIC PRINCIPAL OF FULL AMENITY BOUTIQUE BUILDING.



# 26EDGEWATER

THE NEW EDGE OF LIVING

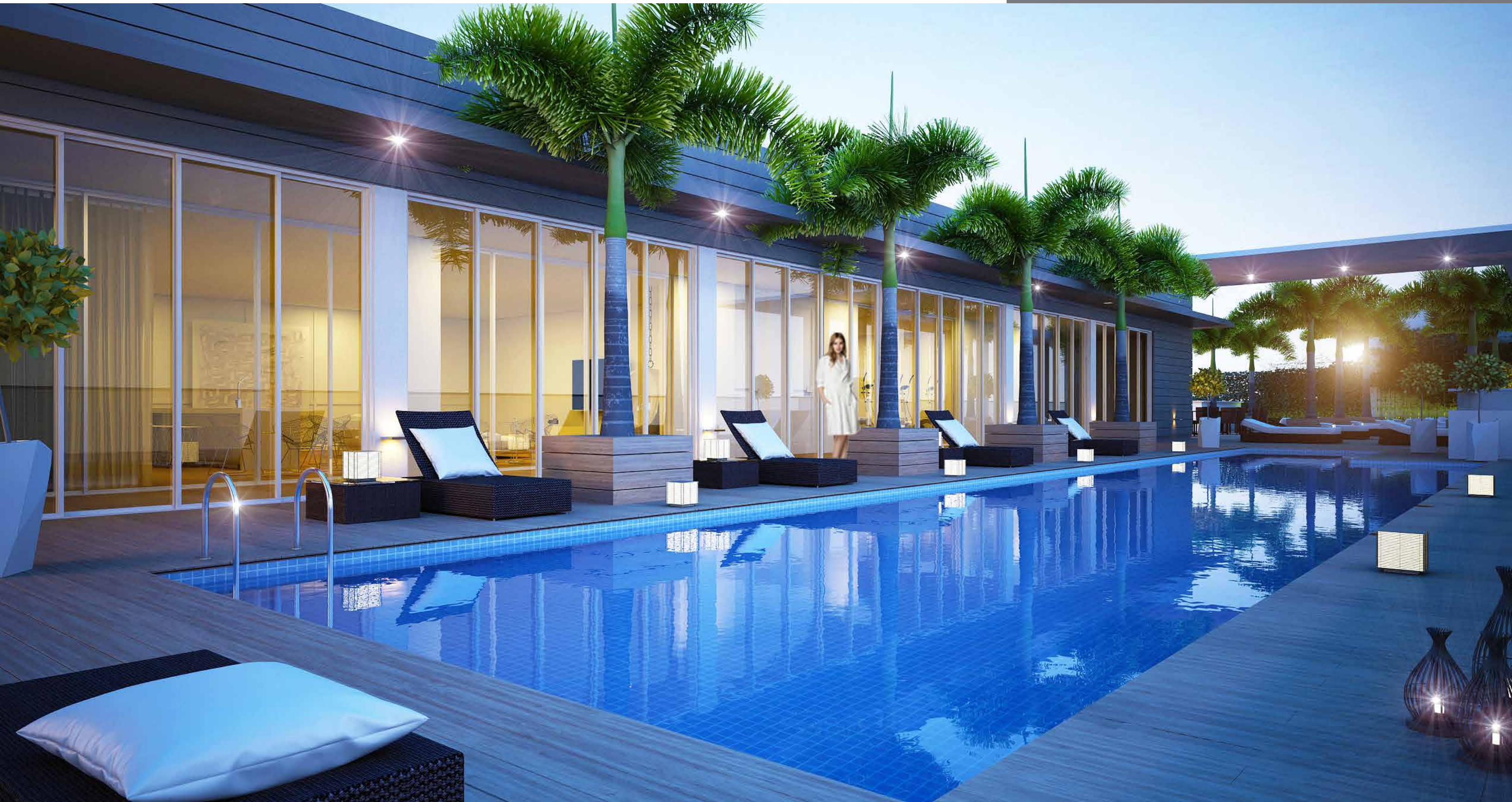


A black and white photograph of a woman standing on a boat, looking out at the ocean. She is wearing a strapless bikini and sunglasses. The text "AT THE EDGE OF EVERYTHING BUT A WORLD AWAY." is overlaid on the right side of the image.

AT THE EDGE OF EVERYTHING  
BUT A WORLD AWAY.



## ROOF TOP POOL AND SUNDECK



Artist's conceptual renderings. See legal disclaimers on last page.

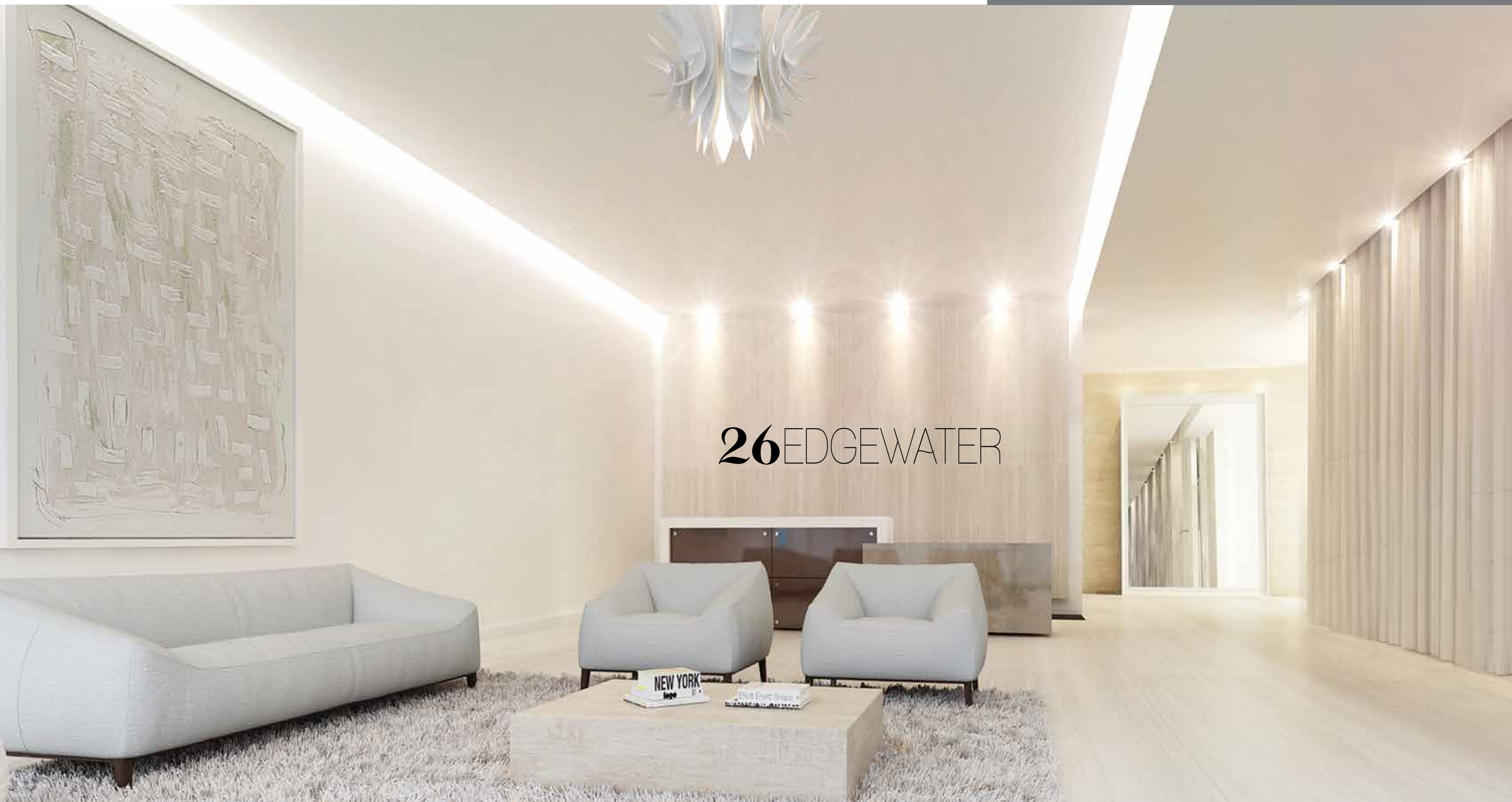


PRIVATE ROOF TOP LOUNGE INCLUDING FULL CATERING KITCHEN



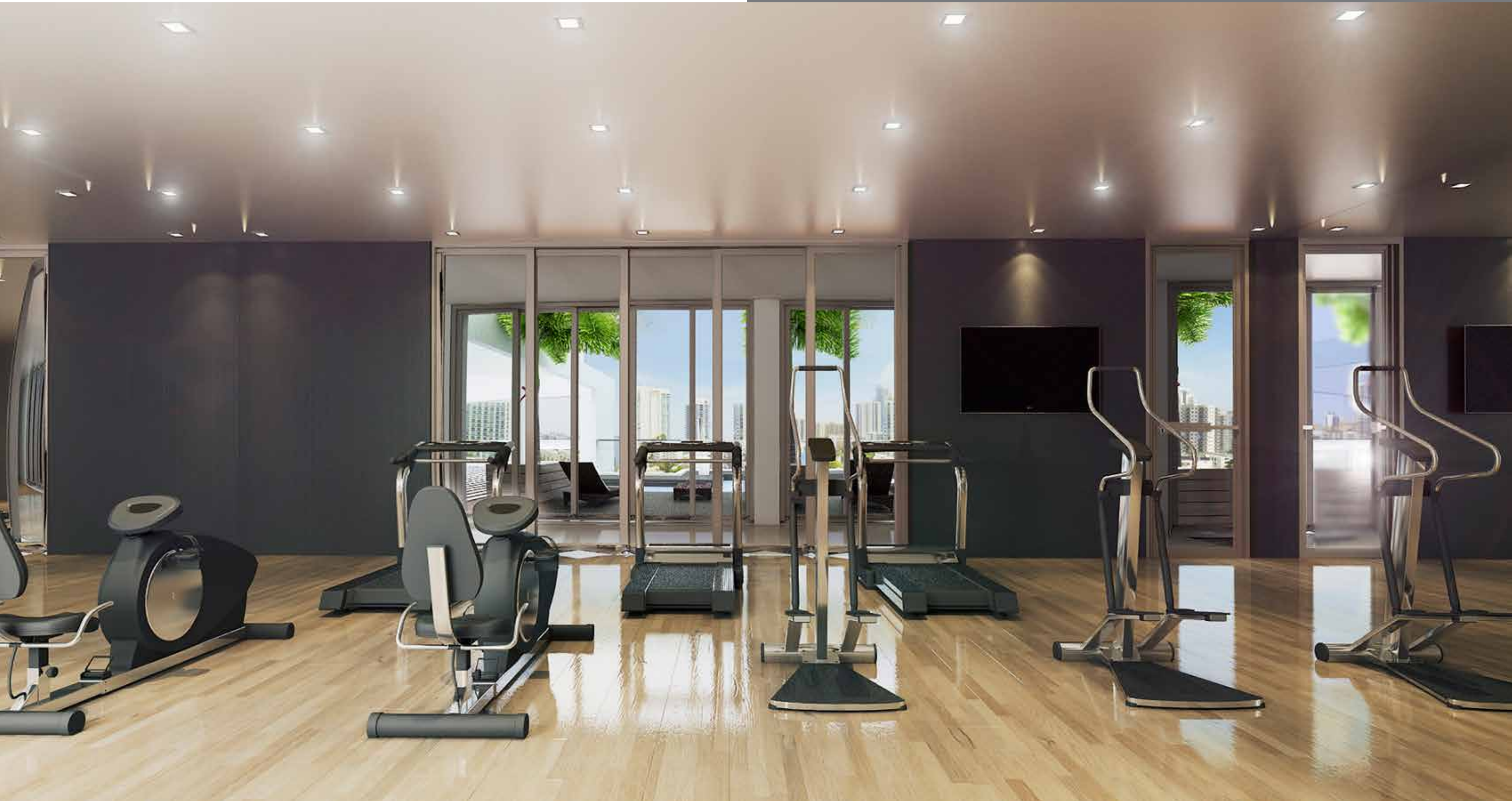
Artist's conceptual renderings. See legal disclaimers on last page.





## 26 EDGEWATER

FITNESS CENTER OVERLOOKING THE POOL AND SUNDECK

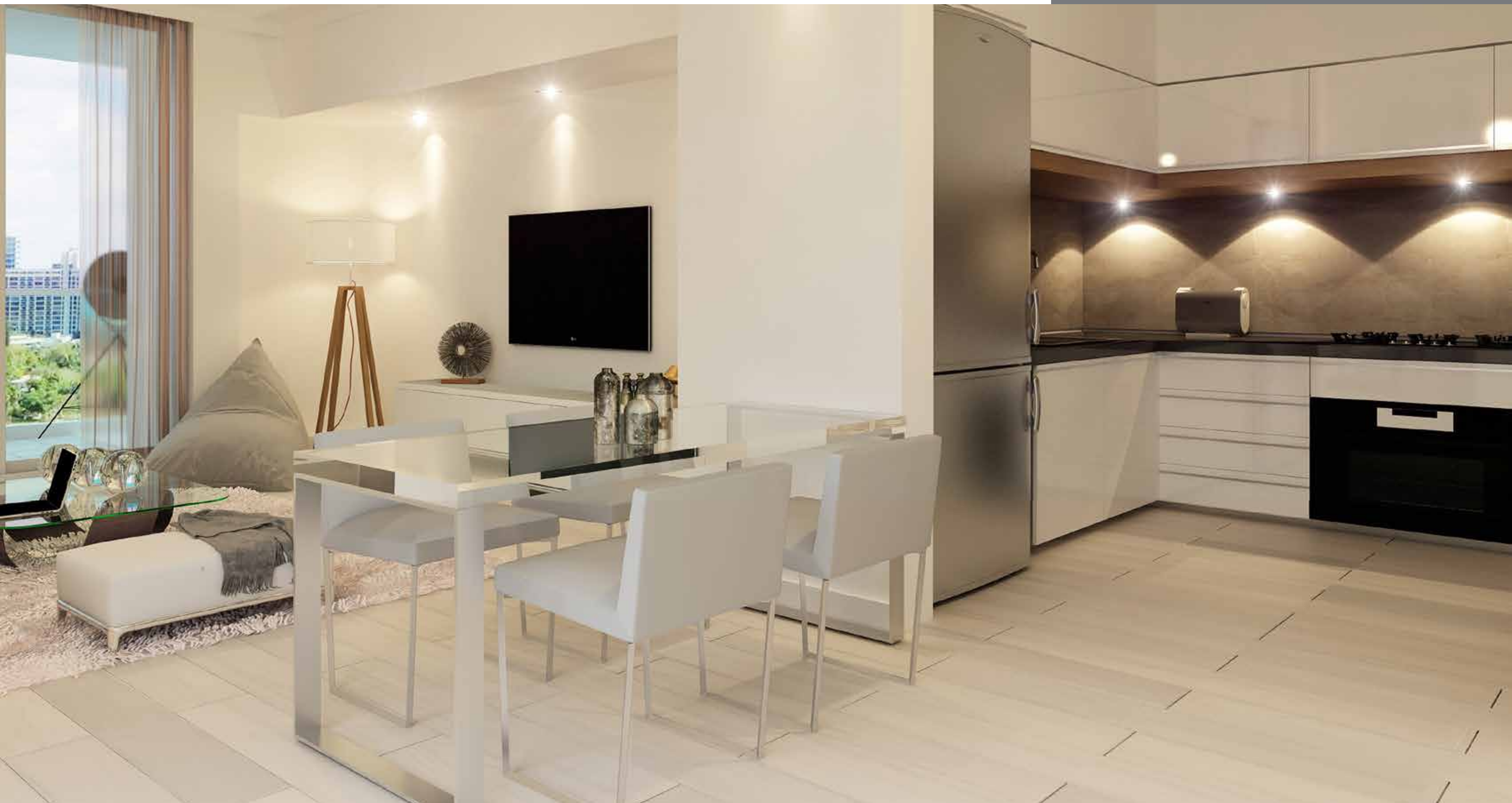






RETREAT TO YOUR OWN HAVEN  
AT THE EDGE

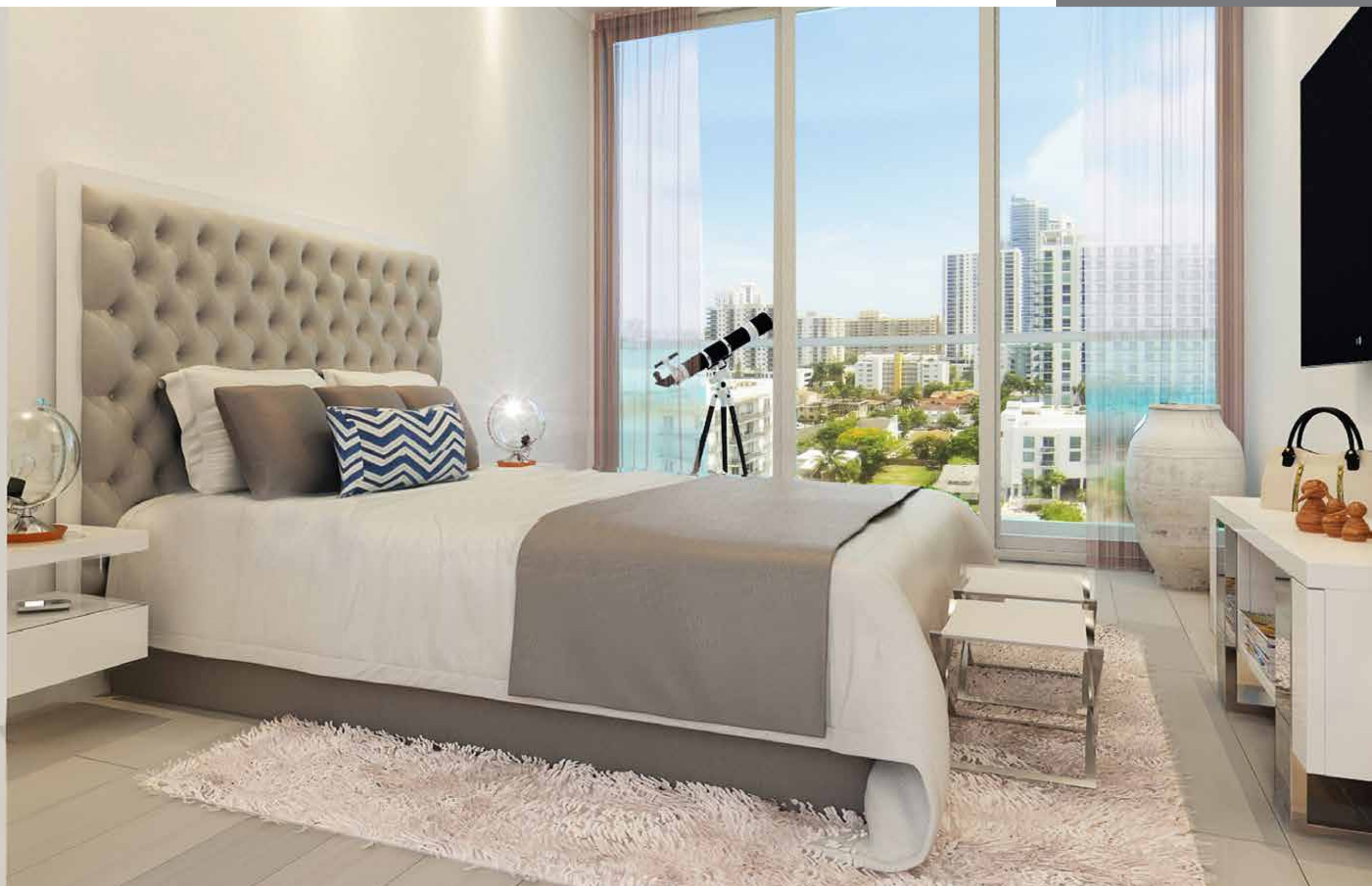














## BATHROOM



## BUILDING AMENITIES

- CONTEMPORARY ARCHITECTURAL DESIGN
- HEATED ROOF TOP POOL AND SUNDECK ON 10TH FLOOR
- PRIVATE ROOF TOP LOUNGE INCLUDING FULL CATERING KITCHEN
- FITNESS CENTER OVERLOOKING THE POOL AND SUNDECK
- SELECT RESIDENCES WITH LANAIS

## RESIDENCE FEATURES

- FURNITURE READY RESIDENCES WITH PORCELAIN WOOD FLOORS THROUGHOUT
- ONE DESIGNATED PARKING SPACE PER RESIDENCE
- FLOOR TO CEILING IMPACT GLASS WINDOWS AND SLIDING DOORS
- 9 FOOT HIGH CEILINGS
- EXPANSIVE TERRACES WITH GLASS FOR UNOBSTRUCTED VIEWS

## KITCHEN

- PREMIUM ITALIAN DESIGN INSPIRED KITCHEN CABINETS
- QUARTZ COUNTERTOPS
- PREMIUM STAINLESS STEEL APPLIANCES
- EUROPEAN STYLE FAUCETS

## BATHROOMS

- EUROPEAN INSPIRED CABINETS WITH EXCEPTIONAL DETAILING
- FLOORS AND WET WALLS CLAD IN IMPORTED DESIGNER PORCELAIN TILE
- FULL SIZE VANITY MIRRORS
- DESIGNER BATHROOM FIXTURES AND ACCESSORIES
- FRAMELESS GLASS ENCLOSED SHOWER



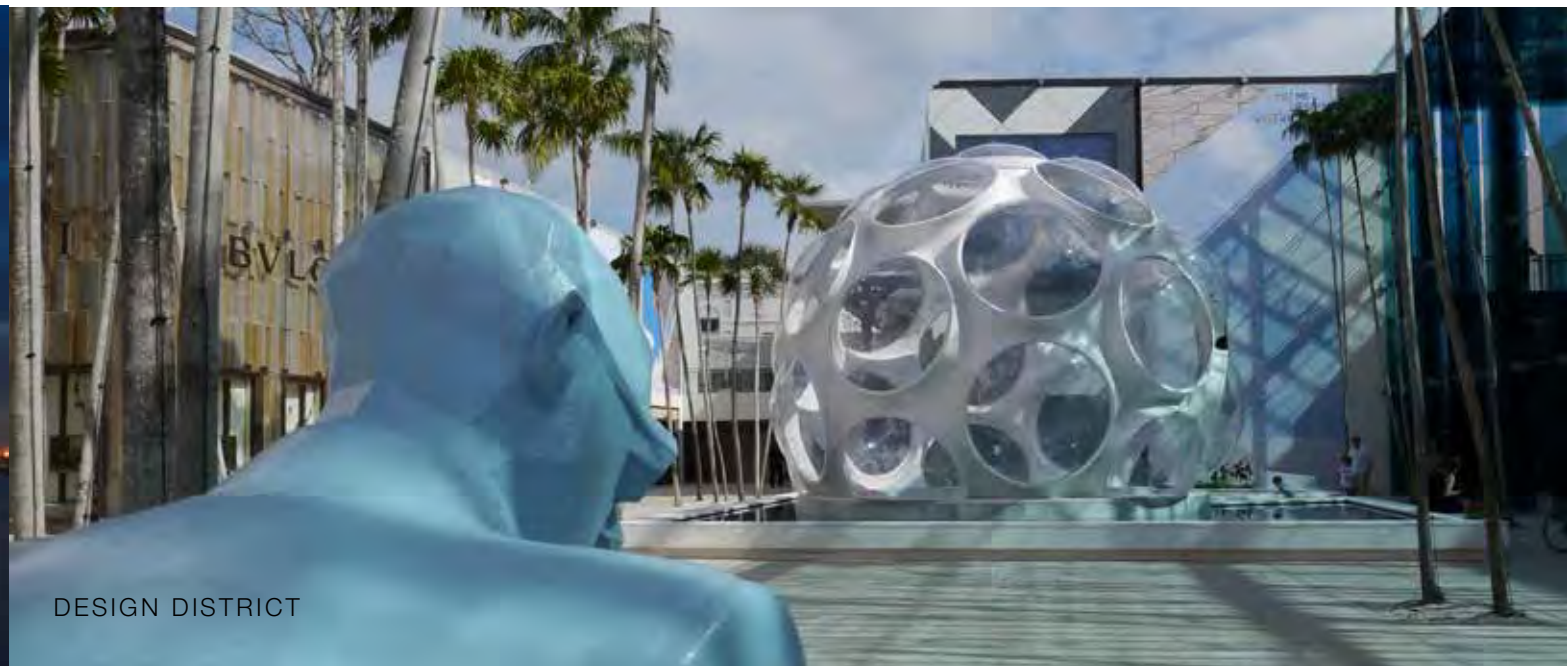
BE AT THE EDGE OF IT ALL







DOWNTOWN MIAMI



DESIGN DISTRICT



PORT OF MIAMI



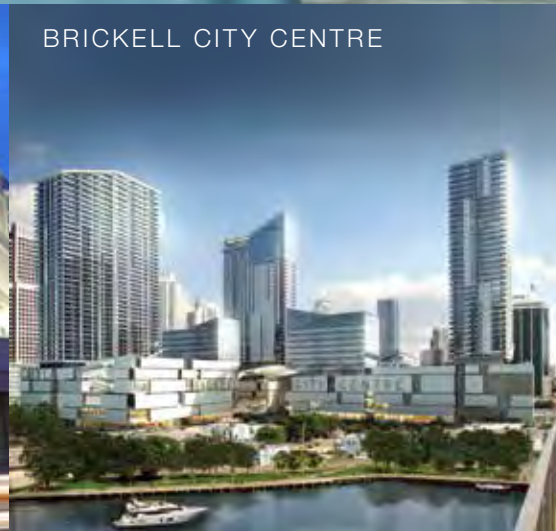
PATRICIA AND PHILLIP FROST  
MUSEUM OF SCIENCE



MIAMI WORLD CENTER



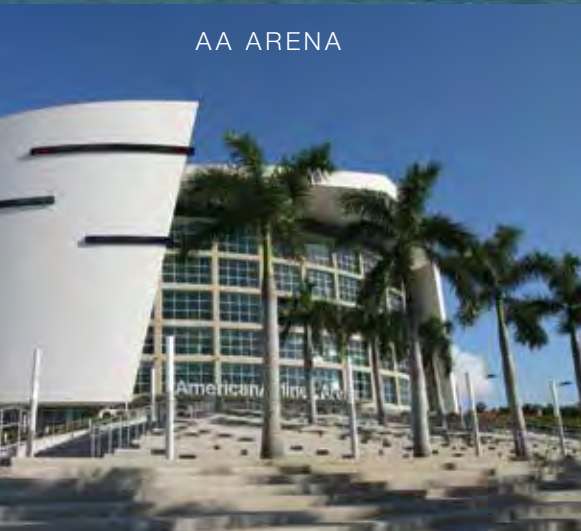
ADRIENNE ARSHT CENTER



BRICKELL CITY CENTRE



MIDTOWN



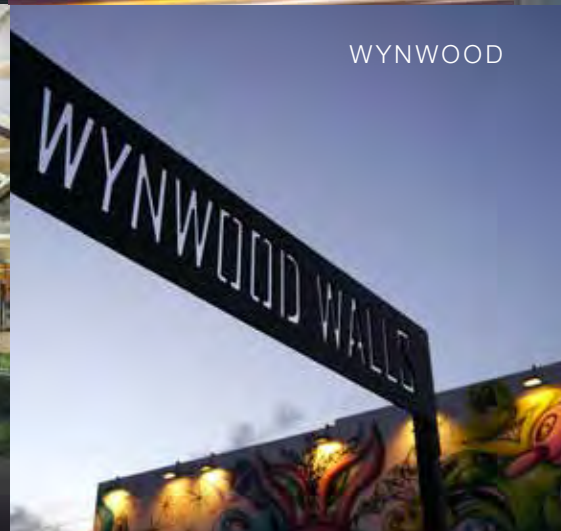
AA ARENA



RESORTS WORLD MIAMI



ALL ABOARD FLORIDA



WYNWOOD



SOUTH BEACH



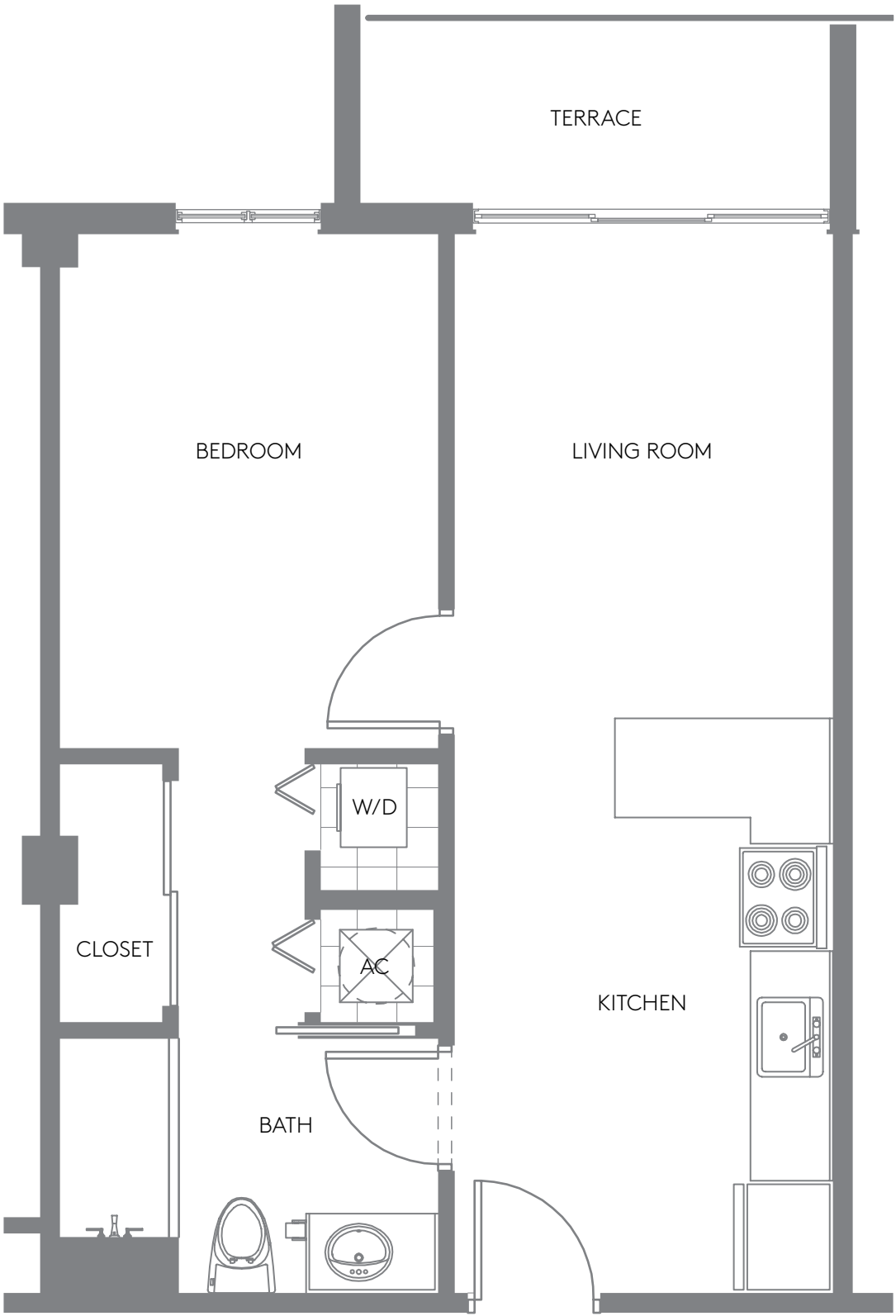
# 1 BEDROOM/1 BATHROOM

<b>LINE 08/09/13/14</b>		
RESIDENCE	560 SF	52.02 M <sup>2</sup>
TERRACE	38 SF	3.53 M <sup>2</sup>
<b>TOTAL</b>	<b>598 SF</b>	<b>55.55 M<sup>2</sup></b>

<b>LINE 15</b>		
RESIDENCE	560 SF	52.02 M <sup>2</sup>
TERRACE	50 SF	4.64 M <sup>2</sup>
<b>TOTAL</b>	<b>610 SF</b>	<b>56.66 M<sup>2</sup></b>

<b>LINE 04/05/18</b>		
RESIDENCE	560 SF	52.02 M <sup>2</sup>
TERRACE	64 SF	5.94 M <sup>2</sup>
<b>TOTAL</b>	<b>624 SF</b>	<b>57.96 M<sup>2</sup></b>

<b>LINE 02,11</b>		
RESIDENCE	560 SF	52.02 M <sup>2</sup>
TERRACE	66 SF	6.13 M <sup>2</sup>
<b>TOTAL</b>	<b>626 SF</b>	<b>58.15 M<sup>2</sup></b>

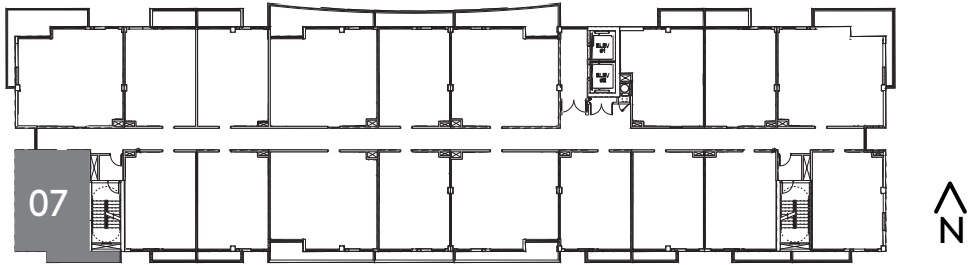
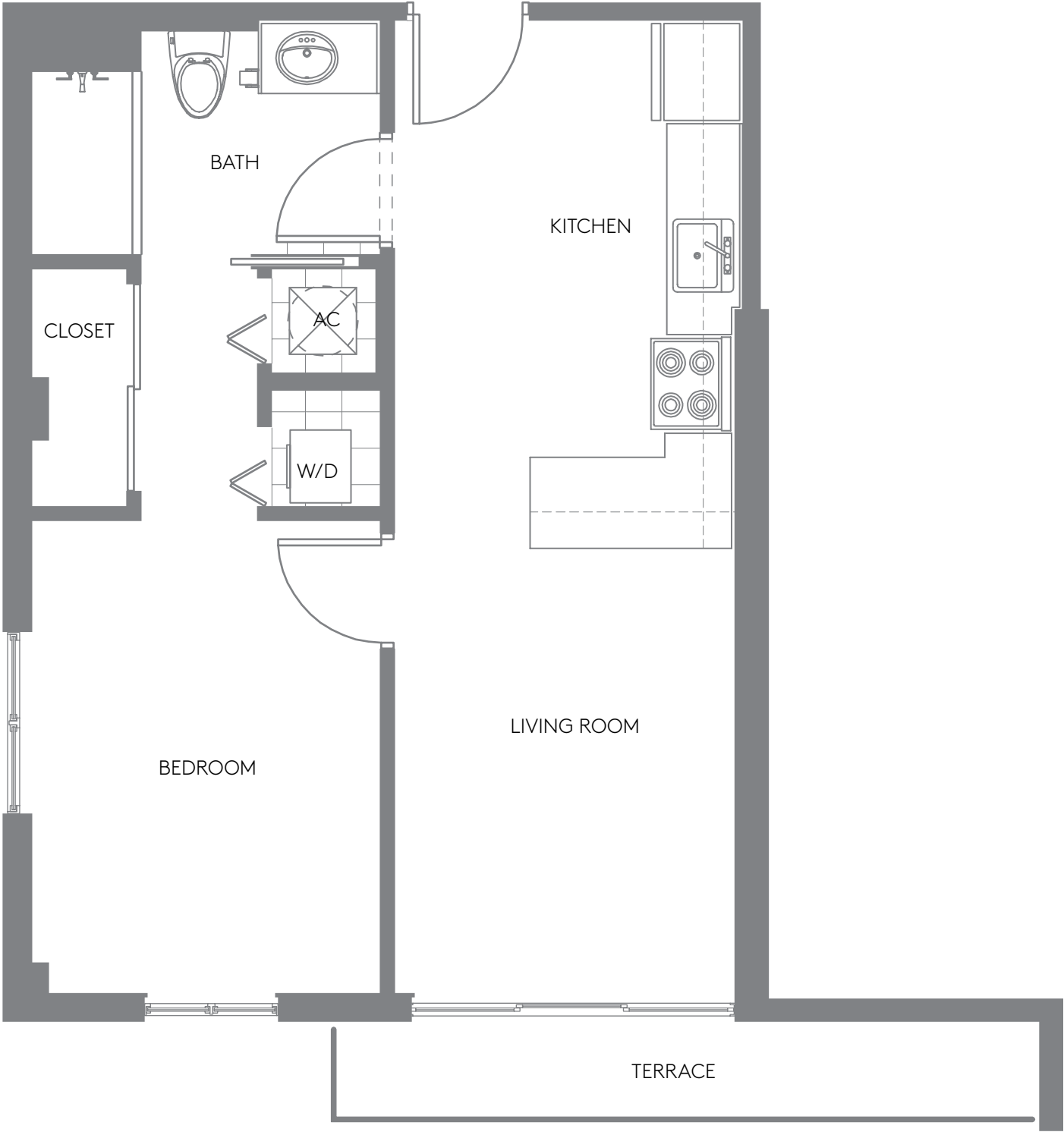


\*PLANS, MATERIALS AND SPECIFICATIONS ARE SUBJECT TO ARCHITECTURAL AND OTHER REVISIONS AT THE SOLE DISCRETION OF THE DEVELOPER, BUILDER OR ARCHITECT, OR AS MAY BE REQUESTED BY LAW. FLOOR PLANS SHOWN ARE NOT OPPORTUNITY TO ANY PARTICULAR SCALE. ALL DIMENSIONS ARE MEASURED TO THE EXTERIOR BOUNDARIES OF THE EXTERIOR WALLS, CORRIDOR WALLS AND TO THE CENTERLINE OF INTERIOR DEMISING WALLS AND MAY VARY FROM THE DESCRIPTION AND DEFINITION OF THE "UNIT" SET FORTH IN THE DECLARATION. ALL DIMENSIONS ARE APPROXIMATE, AND ALL FLOOR PLANS AND DEVELOPMENT PLANS ARE SUBJECT TO CHANGE. EQUAL HOUSING OPPORTUNITY. ORAL REPRESENTATIONS CANNOT BE RELIED UPON AS CORRECTLY STATING REPRESENTATIONS OF THE DEVELOPER. FOR CORRECT REPRESENTATIONS, MAKE REFERENCE TO THE DOCUMENTS REQUIRED BY SECTION 718.503 FLORIDA STATUTES, TO BE FURNISHED BY THE DEVELOPER TO A BUYER OR LESSEE. NOT AN OFFER OR SOLICITATION WHERE PROHIBITED BY STATE STATUTES. ALL OTHERS ARE SUBJECT TO THE TERMS AND CONDITIONS OF ANY SALES OR RESERVATION AGREEMENT WITH THE DEVELOPER. AVAILABILITY AND PRICES OF RESIDENCES ARE SUBJECT TO CHANGE WITHOUT NOTICE. WE ARE PLEDGED TO THE LETTER AND SPIRIT OF U.S. POLICY FOR THE ACHIEVEMENT OF EQUAL HOUSING OPPORTUNITY THROUGHOUT THE NATION. WE ENCOURAGE AND SUPPORT AN AFFIRMATIVE ADVERTISING AND MARKETING PROGRAM IN WHICH THERE ARE NO BARRIERS TO OBTAINING HOUSING BECAUSE OF RACE, COLOR, RELIGION, SEX, HANDICAP, FAMILIAL STATUS OR NATIONAL ORIGIN. PLAN DRAW NOT TO SCALE.



# 1 BEDROOM/1 BATHROOM

LINE 07		
RESIDENCE	568 SF	52.76 M <sup>2</sup>
TERRACE	61 SF	5.66 M <sup>2</sup>
TOTAL	629 SF	58.42 M <sup>2</sup>

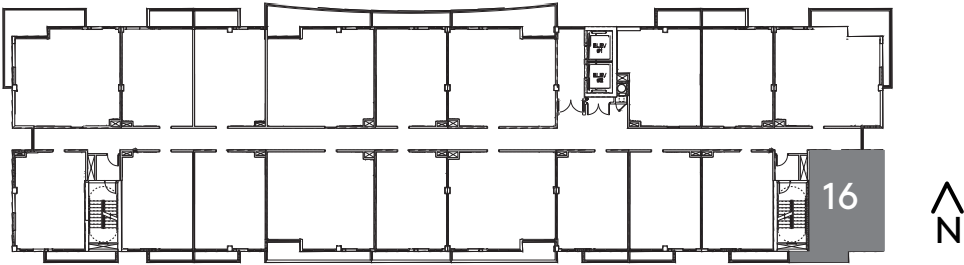
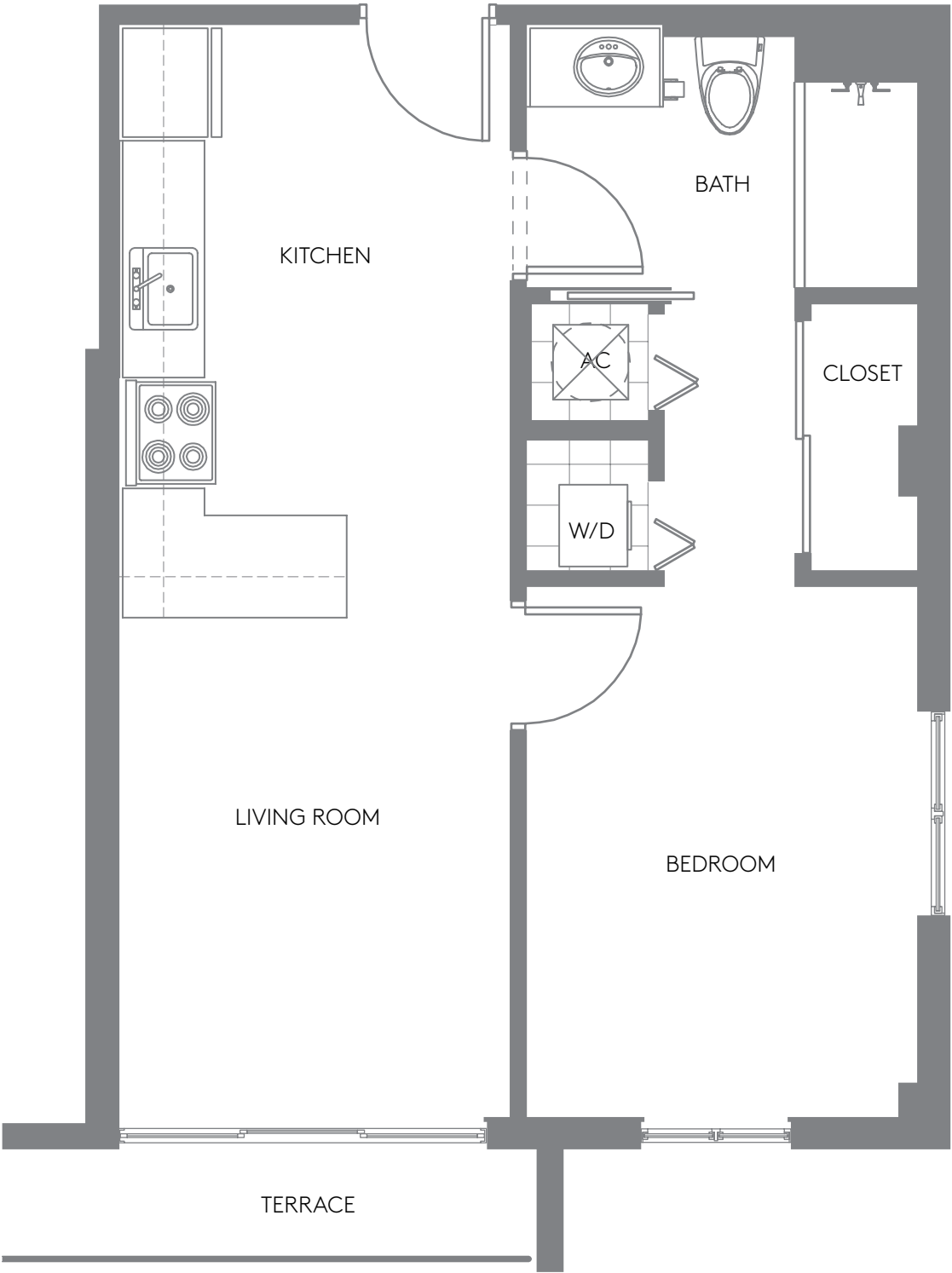


\*PLANS, MATERIALS AND SPECIFICATIONS ARE SUBJECT TO ARCHITECTURAL AND OTHER REVISIONS AT THE SOLE DISCRETION OF THE DEVELOPER, BUILDER OR ARCHITECT, OR AS MAY BE REQUESTED BY LAW. FLOOR PLANS SHOWN ARE NOT OPPORTUNITY TO ANY PARTICULAR SCALE. ALL DIMENSIONS ARE MEASURED TO THE EXTERIOR BOUNDARIES OF THE EXTERIOR WALLS, CORRIDOR WALLS AND TO THE CENTERLINE OF INTERIOR DEMISING WALLS AND MAY VARY FROM THE DESCRIPTION AND DEFINITION OF THE "UNIT" SET FORTH IN THE DECLARATION. ALL DIMENSIONS ARE APPROXIMATE, AND ALL FLOOR PLANS AND DEVELOPMENT PLANS ARE SUBJECT TO CHANGE. EQUAL HOUSING OPPORTUNITY. ORAL REPRESENTATIONS CANNOT BE RELIED UPON AS CORRECTLY STATING REPRESENTATIONS OF THE DEVELOPER. FOR CORRECT REPRESENTATIONS, MAKE REFERENCE TO THE DOCUMENTS REQUIRED BY SECTION 718.503 FLORIDA STATUTES, TO BE FURNISHED BY THE DEVELOPER TO A BUYER OR LESSEE. NOT AN OFFER OR SOLICITATION WHERE PROHIBITED BY STATE STATUTES. ALL OTHERS ARE SUBJECT TO THE TERMS AND CONDITIONS OF ANY SALES OR RESERVATION AGREEMENT WITH THE DEVELOPER. AVAILABILITY AND PRICES OF RESIDENCES ARE SUBJECT TO CHANGE WITHOUT NOTICE. WE ARE PLEDGED TO THE LETTER AND SPIRIT OF U.S. POLICY FOR THE ACHIEVEMENT OF EQUAL HOUSING OPPORTUNITY THROUGHOUT THE NATION. WE ENCOURAGE AND SUPPORT AN AFFIRMATIVE ADVERTISING AND MARKETING PROGRAM IN WHICH THERE ARE NO BARRIERS TO OBTAINING HOUSING BECAUSE OF RACE, COLOR, RELIGION, SEX, HANDICAP, FAMILIAL STATUS OR NATIONAL ORIGIN. PLAN DRAW NOT TO SCALE.



# 1 BEDROOM/1 BATHROOM

LINE 16		
RESIDENCE	574 SF	53.32 M <sup>2</sup>
TERRACE	50 SF	4.64 M <sup>2</sup>
TOTAL	624 SF	57.96 M <sup>2</sup>

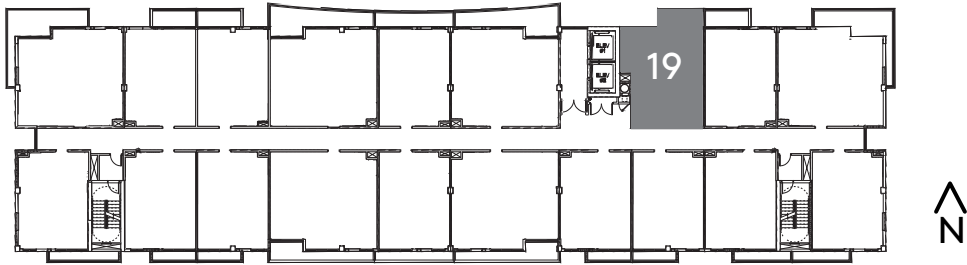
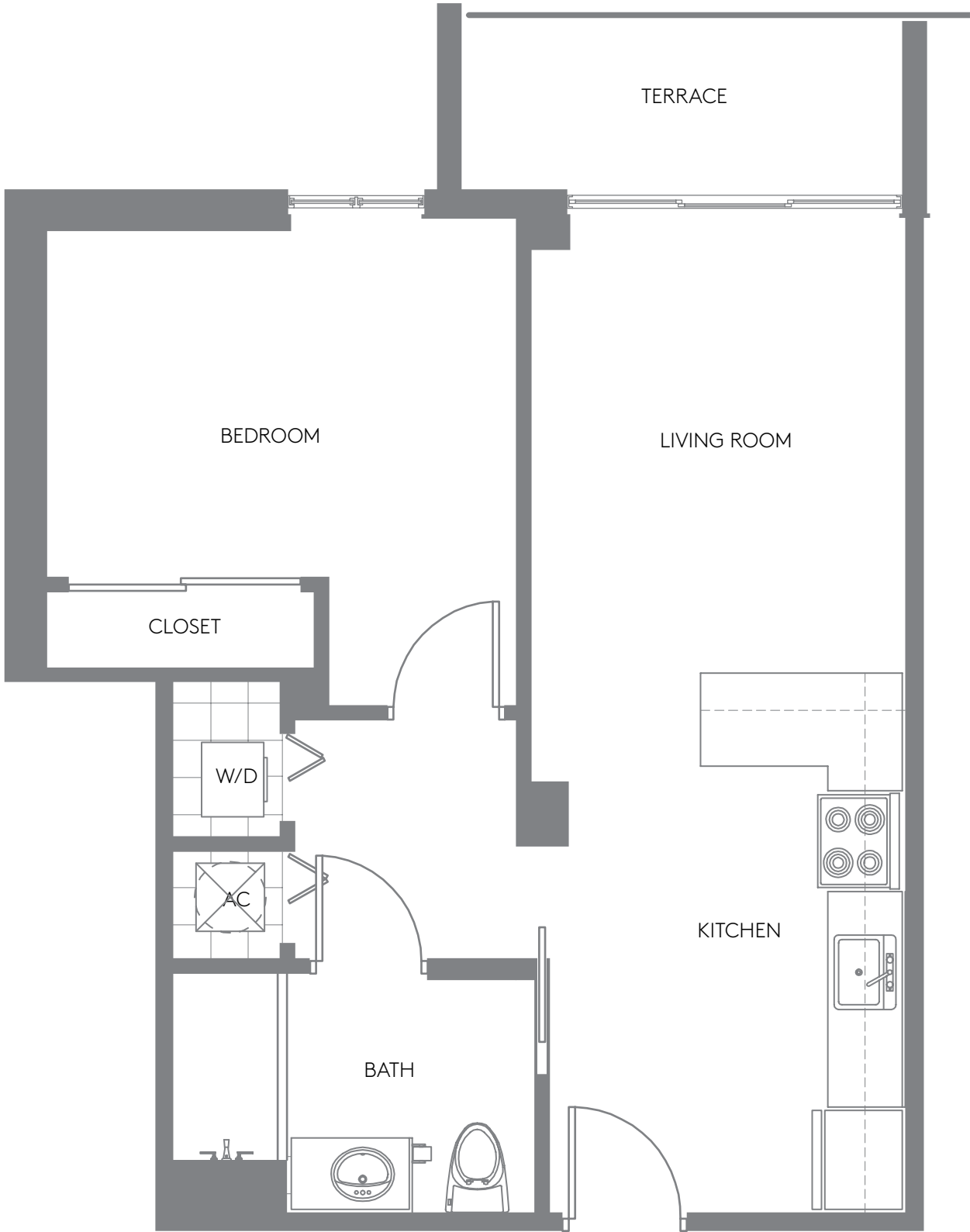


\*PLANS, MATERIALS AND SPECIFICATIONS ARE SUBJECT TO ARCHITECTURAL AND OTHER REVISIONS AT THE SOLE DISCRETION OF THE DEVELOPER, BUILDER OR ARCHITECT, OR AS MAY BE REQUESTED BY LAW. FLOOR PLANS SHOWN ARE NOT OPPORTUNITY TO ANY PARTICULAR SCALE. ALL DIMENSIONS ARE MEASURED TO THE EXTERIOR BOUNDARIES OF THE EXTERIOR WALLS, CORRIDOR WALLS AND TO THE CENTERLINE OF INTERIOR DEMISING WALLS AND MAY VARY FROM THE DESCRIPTION AND DEFINITION OF THE "UNIT" SET FORTH IN THE DECLARATION. ALL DIMENSIONS ARE APPROXIMATE, AND ALL FLOOR PLANS AND DEVELOPMENT PLANS ARE SUBJECT TO CHANGE. EQUAL HOUSING OPPORTUNITY. ORAL REPRESENTATIONS CANNOT BE RELIED UPON AS CORRECTLY STATING REPRESENTATIONS OF THE DEVELOPER. FOR CORRECT REPRESENTATIONS, MAKE REFERENCE TO THE DOCUMENTS REQUIRED BY SECTION 718.503 FLORIDA STATUTES, TO BE FURNISHED BY THE DEVELOPER TO A BUYER OR LESSEE. NOT AN OFFER OR SOLICITATION WHERE PROHIBITED BY STATE STATUTES. ALL OTHERS ARE SUBJECT TO THE TERMS AND CONDITIONS OF ANY SALES OR RESERVATION AGREEMENT WITH THE DEVELOPER. AVAILABILITY AND PRICES OF RESIDENCES ARE SUBJECT TO CHANGE WITHOUT NOTICE. WE ARE PLEDGED TO THE LETTER AND SPIRIT OF U.S. POLICY FOR THE ACHIEVEMENT OF EQUAL HOUSING OPPORTUNITY THROUGHOUT THE NATION. WE ENCOURAGE AND SUPPORT AN AFFIRMATIVE ADVERTISING AND MARKETING PROGRAM IN WHICH THERE ARE NO BARRIERS TO OBTAINING HOUSING BECAUSE OF RACE, COLOR, RELIGION, SEX, HANDICAP, FAMILIAL STATUS OR NATIONAL ORIGIN. PLAN DRAW NOT TO SCALE.



# 1 BEDROOM/1 BATHROOM

<b>LINE 19</b>			
RESIDENCE	605SF	56.20 M <sup>2</sup>	
TERRACE	64 SF	5.94 M <sup>2</sup>	
<b>TOTAL</b>	<b>669 SF</b>	<b>62.14 M<sup>2</sup></b>	

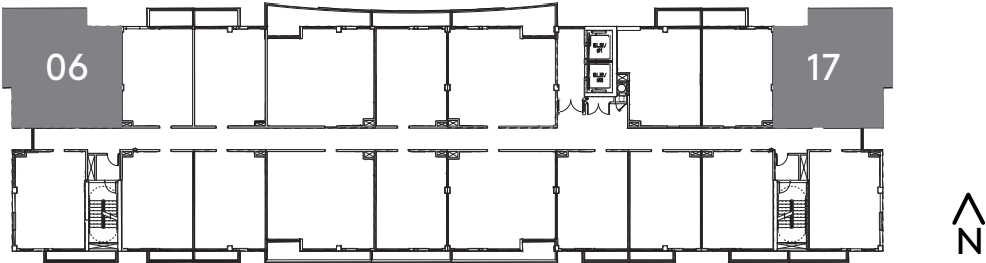


\*PLANS, MATERIALS AND SPECIFICATIONS ARE SUBJECT TO ARCHITECTURAL AND OTHER REVISIONS AT THE SOLE DISCRETION OF THE DEVELOPER, BUILDER OR ARCHITECT, OR AS MAY BE REQUESTED BY LAW. FLOOR PLANS SHOWN ARE NOT OPPORTUNITY TO ANY PARTICULAR SCALE. ALL DIMENSIONS ARE MEASURED TO THE EXTERIOR BOUNDARIES OF THE EXTERIOR WALLS, CORRIDOR WALLS AND TO THE CENTERLINE OF INTERIOR DEMISING WALLS AND MAY VARY FROM THE DESCRIPTION AND DEFINITION OF THE "UNIT" SET FORTH IN THE DECLARATION. ALL DIMENSIONS ARE APPROXIMATE, AND ALL FLOOR PLANS AND DEVELOPMENT PLANS ARE SUBJECT TO CHANGE. EQUAL HOUSING OPPORTUNITY. ORAL REPRESENTATIONS CANNOT BE RELIED UPON AS CORRECTLY STATING REPRESENTATIONS OF THE DEVELOPER. FOR CORRECT REPRESENTATIONS, MAKE REFERENCE TO THE DOCUMENTS REQUIRED BY SECTION 718.503 FLORIDA STATUTES, TO BE FURNISHED BY THE DEVELOPER TO A BUYER OR LESSEE. NOT AN OFFER OR SOLICITATION WHERE PROHIBITED BY STATE STATUTES. ALL OTHERS ARE SUBJECT TO THE TERMS AND CONDITIONS OF ANY SALES OR RESERVATION AGREEMENT WITH THE DEVELOPER. AVAILABILITY AND PRICES OF RESIDENCES ARE SUBJECT TO CHANGE WITHOUT NOTICE. WE ARE PLEDGED TO THE LETTER AND SPIRIT OF U.S. POLICY FOR THE ACHIEVEMENT OF EQUAL HOUSING OPPORTUNITY THROUGHOUT THE NATION. WE ENCOURAGE AND SUPPORT AN AFFIRMATIVE ADVERTISING AND MARKETING PROGRAM IN WHICH THERE ARE NO BARRIERS TO OBTAINING HOUSING BECAUSE OF RACE, COLOR, RELIGION, SEX, HANDICAP, FAMILIAL STATUS OR NATIONAL ORIGIN. PLAN DRAW NOT TO SCALE.



2 BEDROOMS/2 BATHROOMS

LINE 06/17		
RESIDENCE	814 SF	75.82 M <sup>2</sup>
TERRACE	182 SF	16.90 M <sup>2</sup>
TOTAL	996 SF	92.72 M <sup>2</sup>



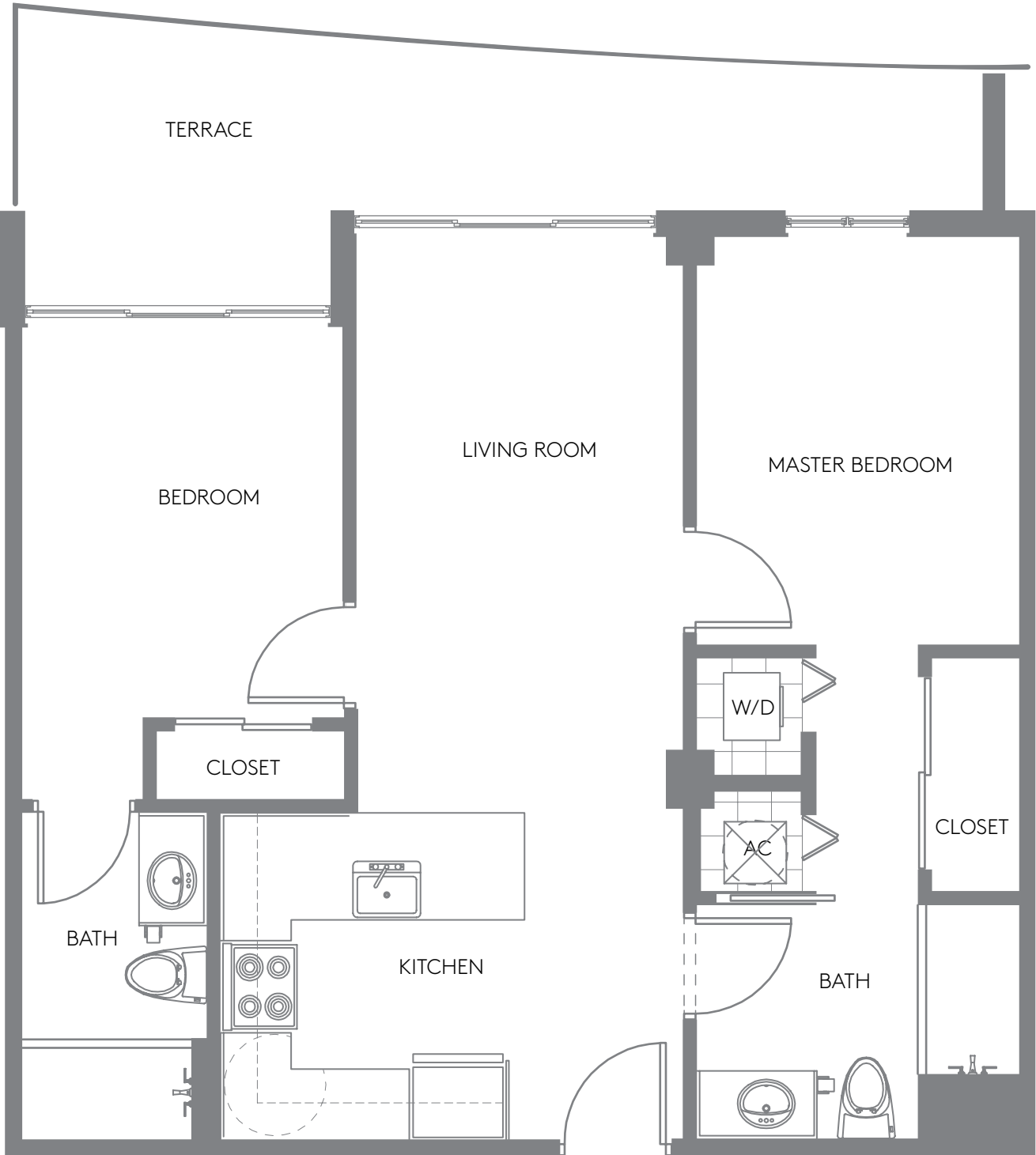
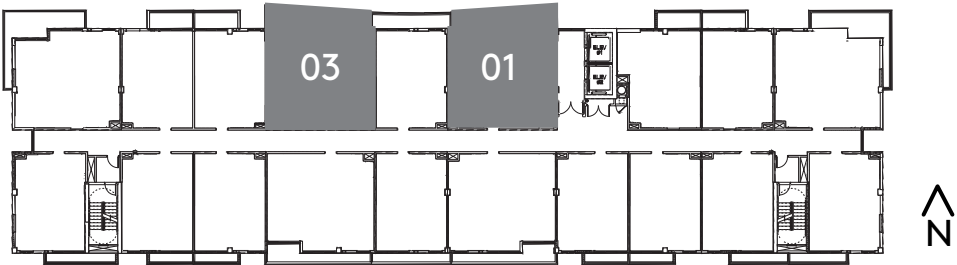
\*PLANS, MATERIALS AND SPECIFICATIONS ARE SUBJECT TO ARCHITECTURAL AND OTHER REVISIONS AT THE SOLE DISCRETION OF THE DEVELOPER, BUILDER OR ARCHITECT, OR AS MAY BE REQUESTED BY LAW. FLOOR PLANS SHOWN ARE NOT OPPORTUNITY TO ANY PARTICULAR SCALE. ALL DIMENSIONS ARE MEASURED TO THE EXTERIOR BOUNDARIES OF THE EXTERIOR WALLS, CORRIDOR WALLS AND TO THE CENTERLINE OF INTERIOR DEMISING WALLS AND MAY VARY FROM THE DESCRIPTION AND DEFINITION OF THE "UNIT" SET FORTH IN THE DECLARATION. ALL DIMENSIONS ARE APPROXIMATE, AND ALL FLOOR PLANS AND DEVELOPMENT PLANS ARE SUBJECT TO CHANGE. EQUAL HOUSING OPPORTUNITY. ORAL REPRESENTATIONS CANNOT BE RELIED UPON AS CORRECTLY STATING REPRESENTATIONS OF THE DEVELOPER. FOR CORRECT REPRESENTATIONS, MAKE REFERENCE TO THE DOCUMENTS REQUIRED BY SECTION 718.503 FLORIDA STATUTES, TO BE FURNISHED BY THE DEVELOPER TO A BUYER OR LESSEE. NOT AN OFFER OR SOLICITATION WHERE PROHIBITED BY STATE STATUTES. ALL OTHERS ARE SUBJECT TO THE TERMS AND CONDITIONS OF ANY SALES OR RESERVATION AGREEMENT WITH THE DEVELOPER. AVAILABILITY AND PRICES OF RESIDENCES ARE SUBJECT TO CHANGE WITHOUT NOTICE. WE ARE PLEDGED TO THE LETTER AND SPIRIT OF U.S. POLICY FOR THE ACHIEVEMENT OF EQUAL HOUSING OPPORTUNITY THROUGHOUT THE NATION. WE ENCOURAGE AND SUPPORT AN AFFIRMATIVE ADVERTISING AND MARKETING PROGRAM IN WHICH THERE ARE NO BARRIERS TO OBTAINING HOUSING BECAUSE OF RACE, COLOR, RELIGION, SEX, HANDICAP, FAMILIAL STATUS OR NATIONAL ORIGIN. PLAN DRAW NOT TO SCALE.



2 BEDROOMS/2 BATHROOMS

LINE 01			
RESIDENCE	821 SF	76.27 M <sup>2</sup>	
TERRACE	180 SF	16.72 M <sup>2</sup>	
TOTAL	1,001 SF	92.99 M <sup>2</sup>	

LINE 03			
RESIDENCE	815 SF	75.71 M <sup>2</sup>	
TERRACE	180 SF	16.72 M <sup>2</sup>	
TOTAL	995 SF	92.43 M <sup>2</sup>	

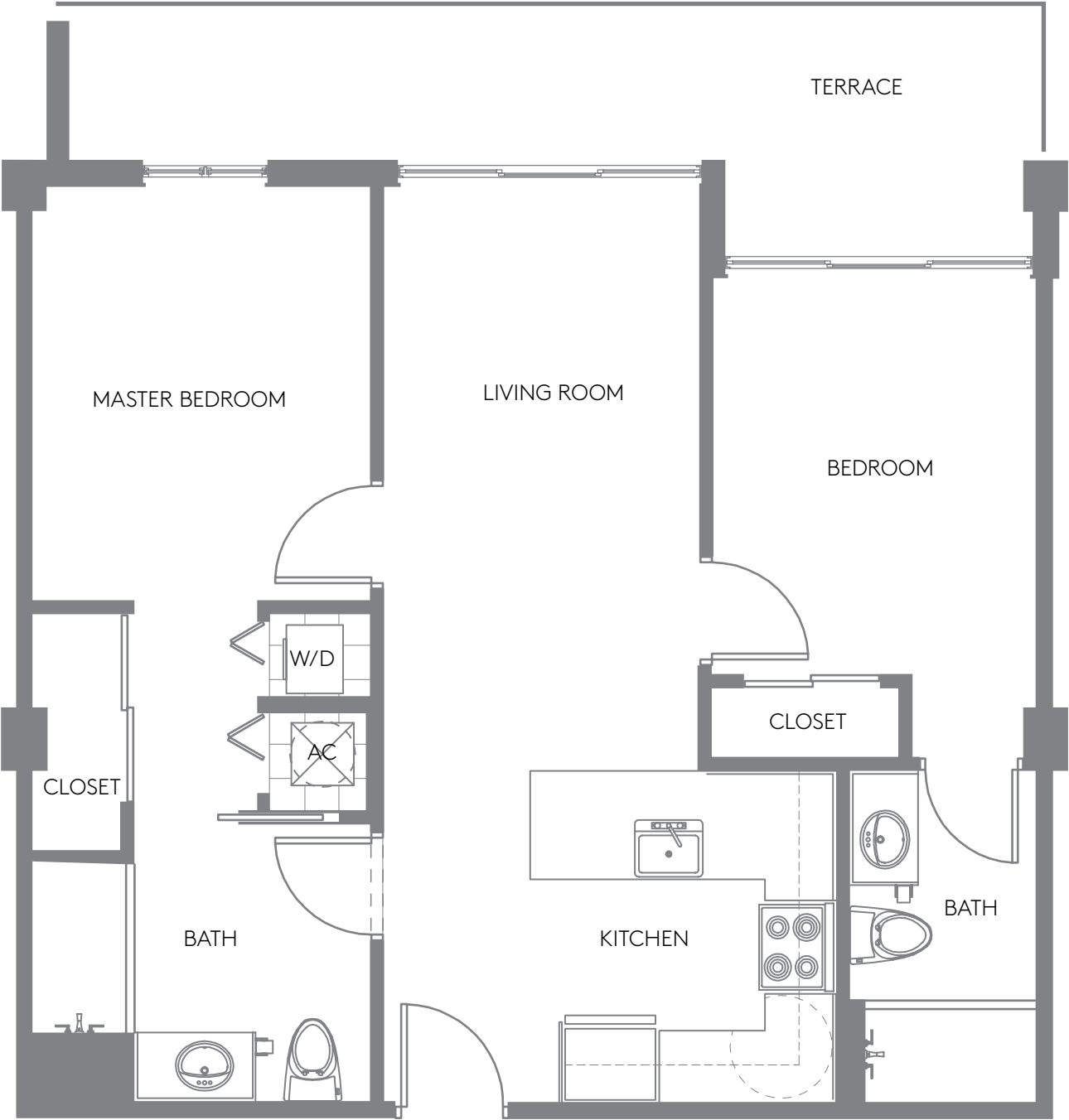
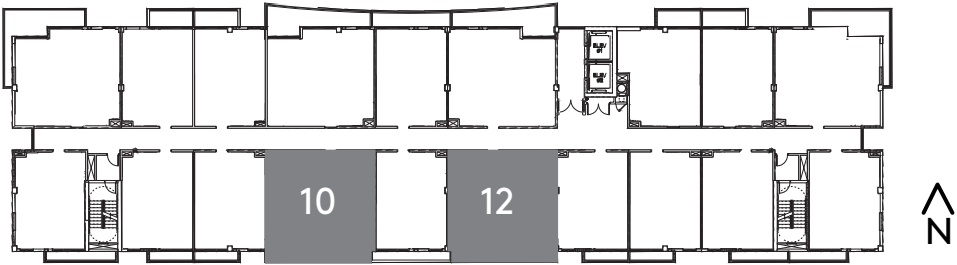


\*PLANS, MATERIALS AND SPECIFICATIONS ARE SUBJECT TO ARCHITECTURAL AND OTHER REVISIONS AT THE SOLE DISCRETION OF THE DEVELOPER, BUILDER OR ARCHITECT, OR AS MAY BE REQUESTED BY LAW. FLOOR PLANS SHOWN ARE NOT OPPORTUNITY TO ANY PARTICULAR SCALE. ALL DIMENSIONS ARE MEASURED TO THE EXTERIOR BOUNDARIES OF THE EXTERIOR WALLS, CORRIDOR WALLS AND TO THE CENTERLINE OF INTERIOR DEMISING WALLS AND MAY VARY FROM THE DESCRIPTION AND DEFINITION OF THE "UNIT" SET FORTH IN THE DECLARATION. ALL DIMENSIONS ARE APPROXIMATE, AND ALL FLOOR PLANS AND DEVELOPMENT PLANS ARE SUBJECT TO CHANGE. EQUAL HOUSING OPPORTUNITY. ORAL REPRESENTATIONS CANNOT BE RELIED UPON AS CORRECTLY STATING REPRESENTATIONS OF THE DEVELOPER. FOR CORRECT REPRESENTATIONS, MAKE REFERENCE TO THE DOCUMENTS REQUIRED BY SECTION 718.503 FLORIDA STATUTES, TO BE FURNISHED BY THE DEVELOPER TO A BUYER OR LESSEE. NOT AN OFFER OR SOLICITATION WHERE PROHIBITED BY STATE STATUTES. ALL OTHERS ARE SUBJECT TO THE TERMS AND CONDITIONS OF ANY SALES OR RESERVATION AGREEMENT WITH THE DEVELOPER. AVAILABILITY AND PRICES OF RESIDENCES ARE SUBJECT TO CHANGE WITHOUT NOTICE. WE ARE PLEDGED TO THE LETTER AND SPIRIT OF U.S. POLICY FOR THE ACHIEVEMENT OF EQUAL HOUSING OPPORTUNITY THROUGHOUT THE NATION. WE ENCOURAGE AND SUPPORT AN AFFIRMATIVE ADVERTISING AND MARKETING PROGRAM IN WHICH THERE ARE NO BARRIERS TO OBTAINING HOUSING BECAUSE OF RACE, COLOR, RELIGION, SEX, HANDICAP, FAMILIAL STATUS OR NATIONAL ORIGIN. PLAN DRAW NOT TO SCALE.

2 BEDROOMS/2 BATHROOMS

LINE 10/12

RESIDENCE	841 SF	78.13 M <sup>2</sup>
TERRACE	180 SF	16.72 M <sup>2</sup>
TOTAL	1,021 SF	94.85 M <sup>2</sup>



\*PLANS, MATERIALS AND SPECIFICATIONS ARE SUBJECT TO ARCHITECTURAL AND OTHER REVISIONS AT THE SOLE DISCRETION OF THE DEVELOPER, BUILDER OR ARCHITECT, OR AS MAY BE REQUESTED BY LAW. FLOOR PLANS SHOWN ARE NOT OPPORTUNITY TO ANY PARTICULAR SCALE. ALL DIMENSIONS ARE MEASURED TO THE EXTERIOR BOUNDARIES OF THE EXTERIOR WALLS, CORRIDOR WALLS AND TO THE CENTERLINE OF INTERIOR DEMISING WALLS AND MAY VARY FROM THE DESCRIPTION AND DEFINITION OF THE "UNIT" SET FORTH IN THE DECLARATION. ALL DIMENSIONS ARE APPROXIMATE, AND ALL FLOOR PLANS AND DEVELOPMENT PLANS ARE SUBJECT TO CHANGE. EQUAL HOUSING OPPORTUNITY. ORAL REPRESENTATIONS CANNOT BE RELIED UPON AS CORRECTLY STATING REPRESENTATIONS OF THE DEVELOPER. FOR CORRECT REPRESENTATIONS, MAKE REFERENCE TO THE DOCUMENTS REQUIRED BY SECTION 718.503 FLORIDA STATUTES, TO BE FURNISHED BY THE DEVELOPER TO A BUYER OR LESSEE. NOT AN OFFER OR SOLICITATION WHERE PROHIBITED BY STATE STATUTES. ALL OTHERS ARE SUBJECT TO THE TERMS AND CONDITIONS OF ANY SALES OR RESERVATION AGREEMENT WITH THE DEVELOPER. AVAILABILITY AND PRICES OF RESIDENCES ARE SUBJECT TO CHANGE WITHOUT NOTICE. WE ARE PLEDGED TO THE LETTER AND SPIRIT OF U.S. POLICY FOR THE ACHIEVEMENT OF EQUAL HOUSING OPPORTUNITY THROUGHOUT THE NATION. WE ENCOURAGE AND SUPPORT AN AFFIRMATIVE ADVERTISING AND MARKETING PROGRAM IN WHICH THERE ARE NO BARRIERS TO OBTAINING HOUSING BECAUSE OF RACE, COLOR, RELIGION, SEX, HANDICAP, FAMILIAL STATUS OR NATIONAL ORIGIN. PLAN DRAW NOT TO SCALE.



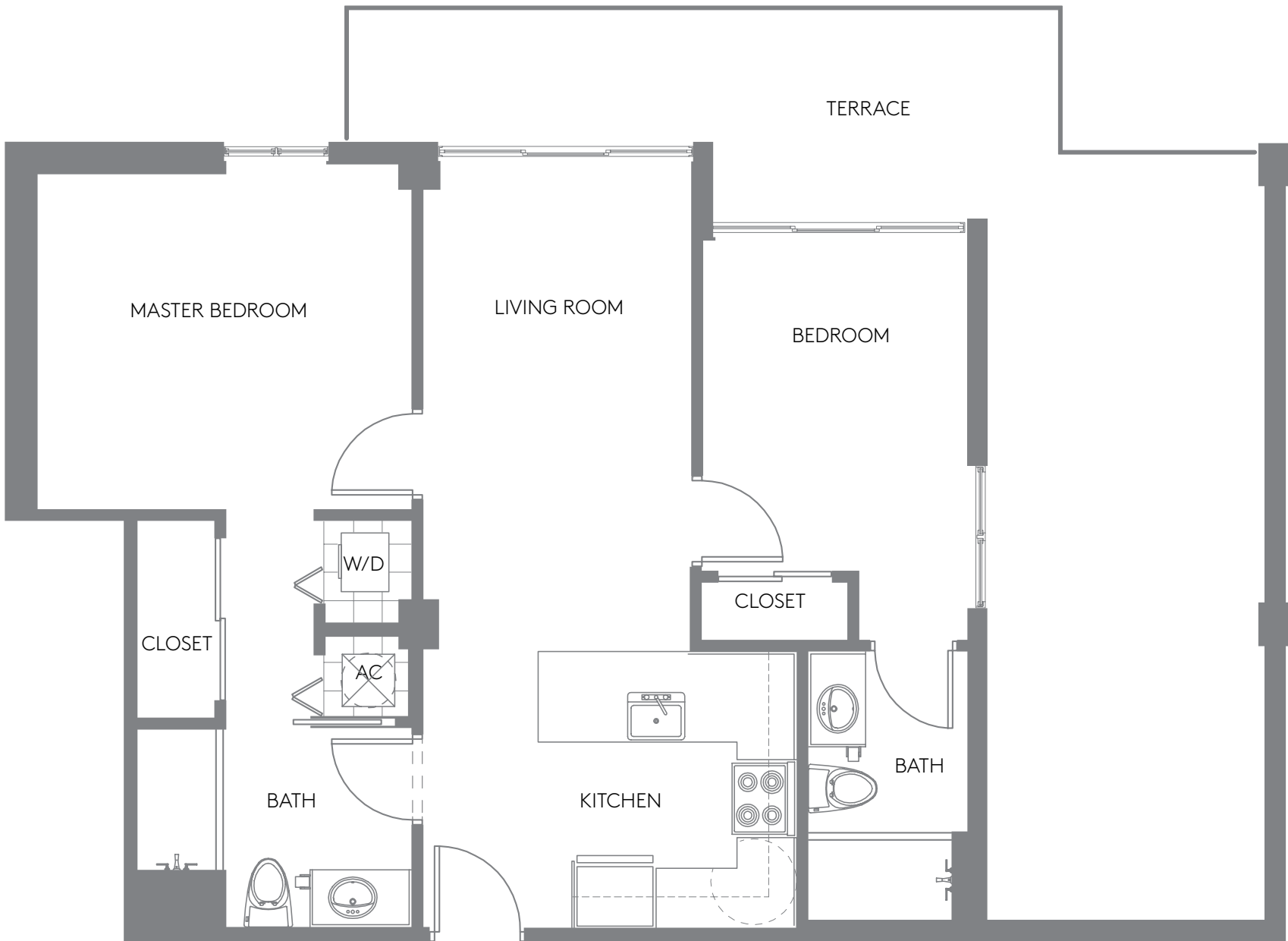
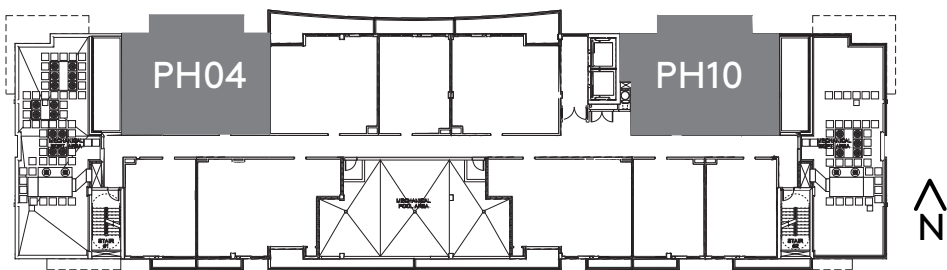
# 2 BEDROOMS/2 BATHROOMS

## LINE PH04

RESIDENCE	815 SF	75.71 M <sup>2</sup>
TERRACE	449 SF	41.71 M <sup>2</sup>
TOTAL	1,264 SF	117.42 M <sup>2</sup>

## LINE PH10

RESIDENCE	863 SF	80.17 M <sup>2</sup>
TERRACE	449 SF	41.71 M <sup>2</sup>
TOTAL	1,312 SF	121.88 M <sup>2</sup>

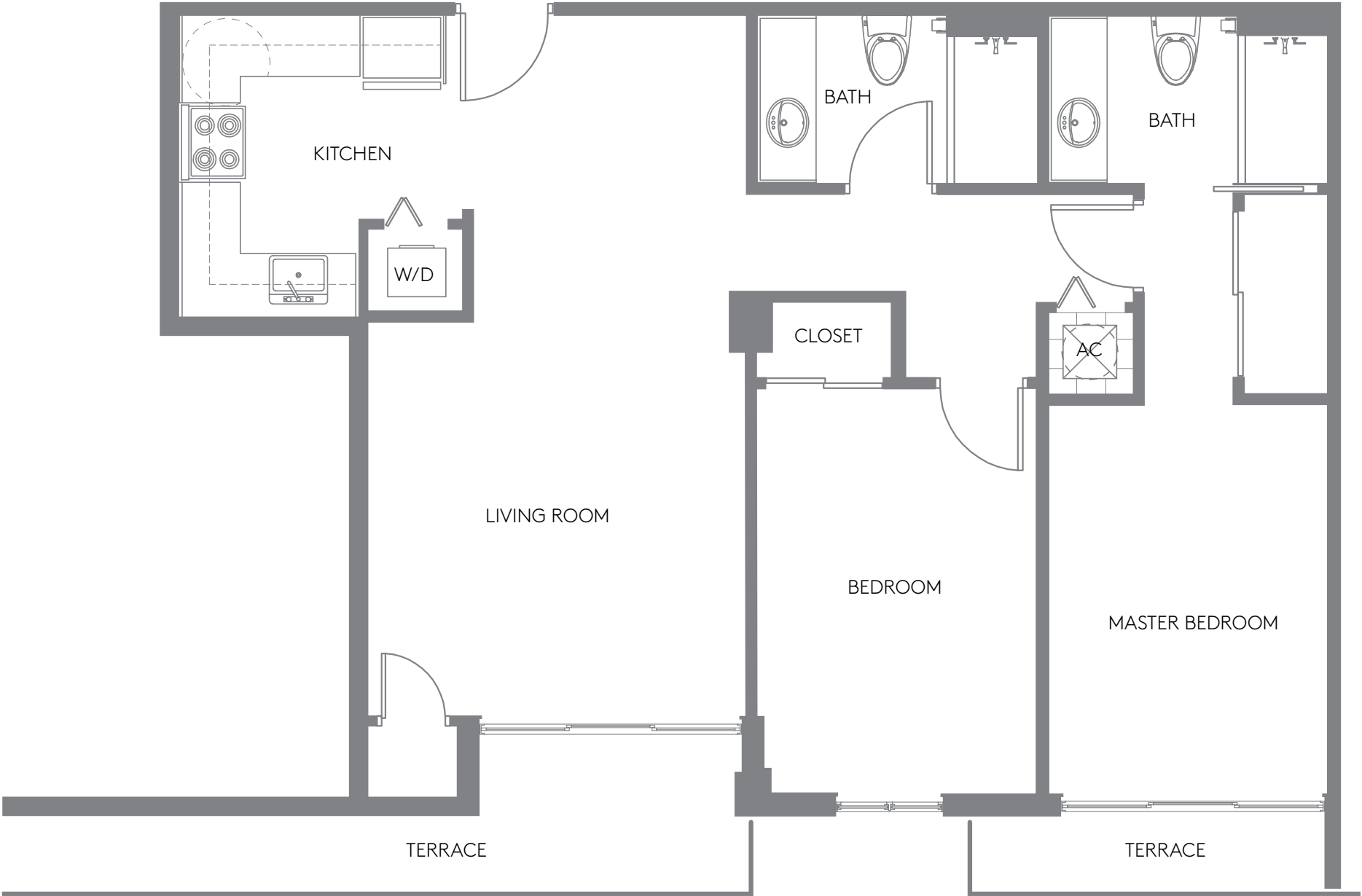
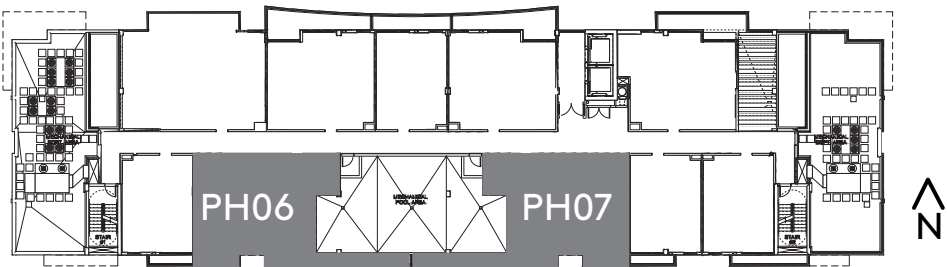


\*PLANS, MATERIALS AND SPECIFICATIONS ARE SUBJECT TO ARCHITECTURAL AND OTHER REVISIONS AT THE SOLE DISCRETION OF THE DEVELOPER, BUILDER OR ARCHITECT, OR AS MAY BE REQUESTED BY LAW. FLOOR PLANS SHOWN ARE NOT OPPORTUNITY TO ANY PARTICULAR SCALE. ALL DIMENSIONS ARE MEASURED TO THE EXTERIOR BOUNDARIES OF THE EXTERIOR WALLS, CORRIDOR WALLS AND TO THE CENTERLINE OF INTERIOR DEMISING WALLS AND MAY VARY FROM THE DESCRIPTION AND DEFINITION OF THE "UNIT" SET FORTH IN THE DECLARATION. ALL DIMENSIONS ARE APPROXIMATE, AND ALL FLOOR PLANS AND DEVELOPMENT PLANS ARE SUBJECT TO CHANGE. EQUAL HOUSING OPPORTUNITY. ORAL REPRESENTATIONS CANNOT BE RELIED UPON AS CORRECTLY STATING REPRESENTATIONS OF THE DEVELOPER. FOR CORRECT REPRESENTATIONS, MAKE REFERENCE TO THE DOCUMENTS REQUIRED BY SECTION 718.503 FLORIDA STATUTES, TO BE FURNISHED BY THE DEVELOPER TO A BUYER OR LESSEE. NOT AN OFFER OR SOLICITATION WHERE PROHIBITED BY STATE STATUTES. ALL OTHERS ARE SUBJECT TO THE TERMS AND CONDITIONS OF ANY SALES OR RESERVATION AGREEMENT WITH THE DEVELOPER. AVAILABILITY AND PRICES OF RESIDENCES ARE SUBJECT TO CHANGE WITHOUT NOTICE. WE ARE PLEDGED TO THE LETTER AND SPIRIT OF U.S. POLICY FOR THE ACHIEVEMENT OF EQUAL HOUSING OPPORTUNITY THROUGHOUT THE NATION. WE ENCOURAGE AND SUPPORT AN AFFIRMATIVE ADVERTISING AND MARKETING PROGRAM IN WHICH THERE ARE NO BARRIERS TO OBTAINING HOUSING BECAUSE OF RACE, COLOR, RELIGION, SEX, HANDICAP, FAMILIAL STATUS OR NATIONAL ORIGIN. PLAN DRAW NOT TO SCALE.

2 BEDROOMS/2 BATHROOMS

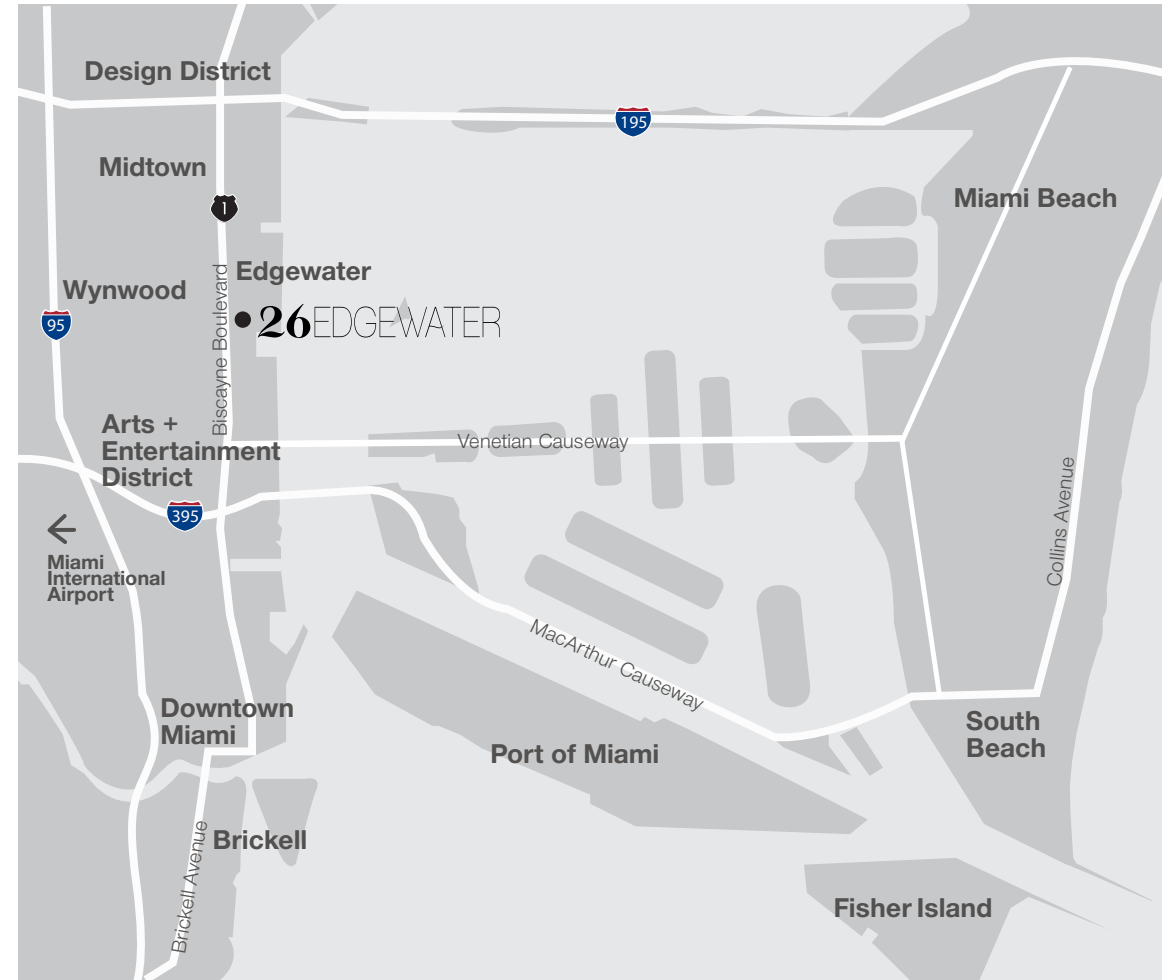
LINE PH6/PH7

RESIDENCE	998 SF	92.71 M <sup>2</sup>
TERRACE	183 SF	17.00 M <sup>2</sup>
TOTAL	1,181 SF	109.71 M <sup>2</sup>



\*PLANS, MATERIALS AND SPECIFICATIONS ARE SUBJECT TO ARCHITECTURAL AND OTHER REVISIONS AT THE SOLE DISCRETION OF THE DEVELOPER, BUILDER OR ARCHITECT, OR AS MAY BE REQUESTED BY LAW. FLOOR PLANS SHOWN ARE NOT OPPORTUNITY TO ANY PARTICULAR SCALE. ALL DIMENSIONS ARE MEASURED TO THE EXTERIOR BOUNDARIES OF THE EXTERIOR WALLS, CORRIDOR WALLS AND TO THE CENTERLINE OF INTERIOR DEMISING WALLS AND MAY VARY FROM THE DESCRIPTION AND DEFINITION OF THE "UNIT" SET FORTH IN THE DECLARATION. ALL DIMENSIONS ARE APPROXIMATE, AND ALL FLOOR PLANS AND DEVELOPMENT PLANS ARE SUBJECT TO CHANGE. EQUAL HOUSING OPPORTUNITY. ORAL REPRESENTATIONS CANNOT BE RELIED UPON AS CORRECTLY STATING REPRESENTATIONS OF THE DEVELOPER. FOR CORRECT REPRESENTATIONS, MAKE REFERENCE TO THE DOCUMENTS REQUIRED BY SECTION 718.503 FLORIDA STATUTES, TO BE FURNISHED BY THE DEVELOPER TO A BUYER OR LESSEE. NOT AN OFFER OR SOLICITATION WHERE PROHIBITED BY STATE STATUTES. ALL OTHERS ARE SUBJECT TO THE TERMS AND CONDITIONS OF ANY SALES OR RESERVATION AGREEMENT WITH THE DEVELOPER. AVAILABILITY AND PRICES OF RESIDENCES ARE SUBJECT TO CHANGE WITHOUT NOTICE. WE ARE PLEDGED TO THE LETTER AND SPIRIT OF U.S. POLICY FOR THE ACHIEVEMENT OF EQUAL HOUSING OPPORTUNITY THROUGHOUT THE NATION. WE ENCOURAGE AND SUPPORT AN AFFIRMATIVE ADVERTISING AND MARKETING PROGRAM IN WHICH THERE ARE NO BARRIERS TO OBTAINING HOUSING BECAUSE OF RACE, COLOR, RELIGION, SEX, HANDICAP, FAMILIAL STATUS OR NATIONAL ORIGIN. PLAN DRAW NOT TO SCALE.





**26**EDGEWATER

321 NE 26 STREET | MIAMI, FL 33137



# STRIPEY

REAL ESTATE DEVELOPMENT

With over 12 years experience in bringing to life more than 45 projects in the US, Argentina, Paraguay and Uruguay, Stripey Real Estate Development has positioned itself as an innovative international developer. Since its inception, success has been attributed to the ability of cohesively combining design, efficiency and exclusive locations, into remarkable residential, commercial and mix-use properties.

[www.stripeydev.com](http://www.stripeydev.com)



# 26EDGEWATER



ORAL REPRESENTATIONS CANNOT BE RELIED UPON AS CORRECTLY STATING THE REPRESENTATIONS OF THE DEVELOPER. FOR CORRECT REPRESENTATIONS, REFERENCE SHOULD BE MADE TO THE DOCUMENTS REQUIRED BY SECTION 718.503, FLORIDA STATUTES, TO BE FURNISHED BY A DEVELOPER TO A BUYER OR LESSEE. THIS OFFERING IS MADE ONLY BY THE PROSPECTUS FOR THE CONDOMINIUM AND NO STATEMENT SHOULD BE RELIED UPON IF NOT MADE IN THE PROSPECTUS. THIS IS NOT AN OFFER TO SELL, OR SOLICITATION OF OFFERS TO BUY, THE CONDOMINIUM UNITS IN STATES WHERE SUCH OFFER OR SOLICITATION CANNOT BE MADE. PRICES, PLANS AND SPECIFICATIONS ARE SUBJECT TO CHANGE WITHOUT NOTICE.

THE SKETCHES, RENDERINGS, GRAPHIC MATERIALS, PLANS, SPECIFICATIONS, TERMS, CONDITIONS AND STATEMENTS CONTAINED IN THIS BROCHURE ARE PROPOSED ONLY, AND THE DEVELOPER RESERVES THE RIGHT TO MODIFY, REVISE OR WITHDRAW ANY OR ALL OF SAME IN ITS SOLE DISCRETION AND WITHOUT PRIOR NOTICE. THE PHOTOGRAPHS CONTAINED IN THIS WEB SITE HAVE BEEN TAKEN OFF-SITE AND ARE MERELY INTENDED AS ILLUSTRATIONS OF THE ACTIVITIES AND CONCEPTS DEPICTED THEREIN. NOTHING HEREIN SHALL CONSTITUTE AN OFFER TO SELL, OR A SOLICITATION OF OFFERS TO BUY, IN STATES IN WHICH SUCH OFFERS OR SOLICITATIONS CANNOT BE MADE.